



Signage available for offices, departments

As NSU enacts phased reopening and personnel return to campus, most buildings, meeting areas, offices and departments will need signage that provides information on hours of operation, health and safety policies and/or social distancing guidelines.

NSU's new graphic designer **Hollis Ervin** (ervinh@nsula.edu) is available to work with you and University Printing to create laminated signage that is visually appealing, professionally designed and consistent with Northwestern State's branding guidelines. The printshop can also produce a sign issued by the Louisiana Department of Health regarding actions to stop the spread of COVID-19.

Contact Hollis at to discuss your specific needs, including the message you want to convey, where the sign will be placed, measurements and other details. He can also be reached at 4586 on Tuesdays and Thursdays.



NSU creates new forum for encouragement

Northwestern State University is launching an initiative to help students, faculty and staff stay connected and feel encouraged during challenging circumstances. The Center of Positivity, Well-being and Hope at www.nsula.edu/positivity, is an online forum where the NSU community can share uplifting performance art, visual art, photographs and inspirational writing, according to **Neeru Deep**, an instructor in the Department of Psychology who is spearheading the initiative, along with a steering committee of administrators, faculty from different departments, staff and students.

"The mission of the Center for Positivity, Wellbeing and Hope is to

promote positive thinking, enhance well-being and instill resilience and hope to the NSU family so they can enhance their lives, transform communities and positively impact the world," Deep said.

Deep proposed the idea to university and departmental administrators with positive feedback. She credited **Anna Jennings**, NSU IT application developer, with designing the web page; **Beth Mann**, former director of publications, with designing the logo and **Dr. Carmella Parker**, coordinator of outreach and special projects and associate professor in the School of Business, for creating a submission form to ensure that content

Northwestern State University does not discriminate on the basis of race, color, gender, religion, sexual orientation, national origin, disability, genetic information, age, pregnancy or parenting status, and veteran or retirement status in its programs and activities and provides equal access to the Boy Scouts and other designated youth groups.

The following have been designated to handle inquiries regarding non-discrimination policies (i.e., Title IX): Employees/Potential Employees - Veronica M. Biscoe, EEO Officer (318-357-6359) or Students - Frances Conine, Dean of Students (318-357-5286).

For Americans with Disabilities Act (ADA) concerns, contact the Disability Support and Tutoring Director, Catherine Fauchaux, at 318-357-4460.

*Inquiries regarding employment applications should call Business Affairs (318-357-5446).



STAY SAFE



**AND ORDER YOUR
NSU FACE MASK TODAY!**



- Price: \$18.00
- All proceeds will benefit the NSU Alumni Association and the Corona Virus Emergency Relief Fund, available to assist students with immediate needs as a result of COVID-19.
- Expect a 2-3 week turn around time from date of purchase.
- Shipping is available. Masks will ship from Posey's Sports Center in Natchitoches.

poseys.chipply.com/nsualumnimasks2020

Due to popular demand, the NSU Alumni Association continues to sell Northwestern State University branded face masks for the foreseeable future! Stay safe and get your NSU face mask from Posey's Sports Center's web store at poseys.chipply.com/nsualumnimasks2020!

Center for Positivity ... Continued from Page 1

offered for submission is original and meets guidelines for publication. Deep is working closely with Counseling and Career Services staff **Rebecca Boone**, director, and **Maggie Welch**, assistant

director, to share content that positively impacts the NSU family. Many faculty members, staff and students provided the material for the website.

The initiative dovetails with the university's efforts to address the mental health of the campus community as individuals cope with hardships created by the COVID-19 pandemic, social distancing and uncertainties about the future.

Immediate response to launch was positive with praise from faculty who shared the link with students.

"Looks great, Neeru! So exciting to see your vision come to fruition, what a collaborative process,"



Neeru Deep

wrote **Dr. Kim McAlister**, Dean of the Gallaspy College of Education and Human Development.

"Very inspiring," wrote **Dr. Jim Mischler**, head of the Department of English, Foreign Languages and Cultural Studies. "Thanks for your vision and your hard work on this project, Neeru. It will help all of us now—and in the future."

"This is a wonderful site. I will post the Center's website address in my Moodle course shells for students to explore and enjoy," wrote **Dr. Marcia Hardy**, a professor in NSU's School of Business."

Deep expressed thanks to everyone who helped her to bring her vision of Center for Positivity, Well-being, and Hope to reality.

To submit items to be placed on the site, email positivity@nsula.edu.

In Memory

John Garland Williams passed away Sunday morning, May 24, 2020, at the age of 75.

He was born on July 8, 1944, in Jacksonville, Florida, and grew up on Cane River in Natchitoches. He is a graduate of St. Mary's High School, where he played baseball and basketball. He studied agriculture at LSU before entering Tulane Law School. In 1968 he graduated from law school, passed the bar exam, got married, and entered the United States Marine Corps, where he served as a Judge Advocate General.

He returned to Natchitoches in 1973, practiced law, served as assistant district attorney and taught in the College of Business at Northwestern State University. He was a member of Immaculate Conception Catholic Church and served as lector for many years. He was also a founding member of the Dirty Dozen Social Club.

He was preceded in death by his parents, Judge Richard B. Williams and Ora G.



John G. Williams

Williams, and his sister, Ann Williams Brittain.

He is survived by his wife **Suzanne**, daughters Brooke (Trini) of Natchitoches and Shelly of Hoboken NJ, and son Scott of Natchitoches, brothers Father Richard B. Williams of Lubbock, TX, Joe Payne Williams of Natchitoches, as well as numerous nieces, nephews, great-nieces and great-nephews.

John Williams was a great husband, father, friend, and

storyteller. He cheered for LSU, NSU, the Saints (he was at their first regular season game) and never got tired of watching John Wayne movies. He was proud of his military service and his hometown, as countless strangers would inevitably find out. He greatly enjoyed teaching over the course of 47 years, sometimes teaching the children and grandchildren of former students. He loved traveling across the country as well as abroad with his family and friends.

A graveside service conducted by Father Craig Scott for family members will be held on Thursday, May 28. Pallbearers will be Trini Triggs, Jack Brittain, Jr., John Brittain, Payne Williams, Bray Williams, Bryan Picou and Bryan Picou, Jr.

Honorary pallbearers include his longtime teaching aides Shadrach, Meshach, Abednego, Hobart Macgroniack, Lillie Licksillet, and Susie Stepingofetchit.

A memorial service will be held at a later time for family and friends to reminisce, tell story after story and share their memories of him.

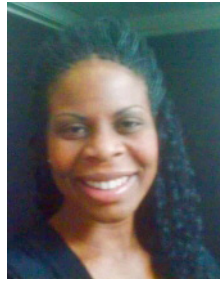
In lieu of flowers, contributions can be made to the NSU Foundation, 535 University Parkway, Natchitoches, LA 71497 for the John G. Williams Memorial Scholarship in Business.

Counseling services available

To support faculty during the COVID-19 crisis, Counseling and Career Services free brief counseling services for faculty from 8 a.m.-3 p.m. Monday through Thursday and from 8 a.m.-noon Fridays through Aug. 15.

Sessions can be via WebEx, Zoom, FaceTime, or face-to-face 305 Student Union.

Contact **Rebecca Boone** at booner@nsula.edu or call 318) 357-5621.



Belinda Michelle Williams

Belinda Williams Scholarship will benefit nursing/biology majors

Friends, family and school classmates are honoring the memory of Belinda Michelle Williams by creating an endowed scholarship in her name that will benefit Northwestern State University students majoring in nursing and biology. Gabrielle Bellard, a nursing major from Opelousas, is the inaugural recipient of the Belinda Michelle Williams Memorial Scholarship that will be awarded to a nursing major each fall and a biology major each spring semester with preference to a minority female with a 3.0 or better grade point average.

“Never has the need been greater to help individuals who wish to become health professionals due to the COVID-19 world crisis. As such, we are proud to support Ms. Bellard and in doing so, help continue my sister’s legacy,” said Williams’ sister, **Dr. Carmella Parker**, coordinator of outreach and special projects and associate professor in the School of Business.

Williams was born May 24, 1978, in Alexandria, to the late Tom Williams, Jr. and

Linda Gail Culbert Williams. She attended schools in Vernon Parish and graduated from Leesville High School in May 1996. Upon her completion of high school, she continued her education and attended Northwestern State University.

Williams graduated from the University of New Orleans with a BA and MA in Healthcare Management. She earned a BSN from LSU and Nurse Practitioner certification from the UTSA Health Science Center. Williams, a former captain in the United States Army and a Nurse Practitioner, was attending the St. James Medical School in St. Vincent Island at the time of her passing.

The scholarship was made possible by her classmates in Leesville graduating class of 1996, friends, family and faculty at NSU.

Friends who wish to contribute to the scholarship can visit northwesternstatealumni.com, Give to the NSU Foundation link and indicate in comments the Belinda Williams Scholarship.

NSU’s Phi Beta Delta wins Outstanding Chapter Award

Northwestern State University’s Eta Mu chapter of Phi Beta Delta, the honor society for international scholars, is the 2020 recipient of the Eileen M. Evans Outstanding Chapter Award. The award is for outstanding service to Phi Beta Delta, significant chapter growth and development and exemplar programming to promote international education.

The announcement was made at the conclusion of the organization’s virtual conference that took place May 14-15 and included

presentations by several NSU faculty.

Dr. Sharon Joy, NSU’s chapter coordinator, was installed as Phi Beta Delta president-elect.

NSU faculty presenters were **Dr. Jason Powell**, **Dr. Sarah Wright** and **Dr. Begoña Perez-Mira**, who discussed “A Micro-Study Abroad Experiential Learning Activity in Spain,” **Dr. Benjamin Forkner** on “Building Cross-Cultural Awareness in an Immersion Setting,” Joy on “The Impact of the Current Coronavirus Pandemic on

International Education,” **Dr. Weiwen Liao**, **Dr. Elizabeth Prejean** and **Dr. Carmella Parker** on “Highlighting an Agile Process in Developing an International Exchange and Dual Degree Program” and **Dr. Marcia Hardy** on “Innovative International Partnerships: Erasmus + Grant for Teaching.” Joy also moderated one session on study-abroad.

NSU’s Eta Mu chapter will host next year’s 35th annual Phi Beta Delta international conference in Natchitoches May 21-22, 2021. (See related story on Page 5.)

NSU will host 2021 conference for international scholars

Northwestern State University's chapter of Phi Beta Delta Honor Society for International Scholars will host the organization's international conference on and around the NSU campus May 21-22, 2021. The conference will include presentations, meetings, a banquet, reception and entertainment featuring performers from NSU's School of Creative and Performing Arts, according to **Dr. Sharon Joy**, president and chapter coordinator.

"I've been attending these conferences since the early 2000s," Joy said. "I've attended them in Washington D.C., Miami Beach, Philadelphia, San Diego, Long Beach, California, and last year at Shepherd University in Shepherdstown, West Virginia. I've served on the National Board this past year and proposed that we hold the May 2021 conference here at NSU. There were a few proposals and ours was selected."

Joy said **NSU President Dr. Chris Maggio** was supportive of the proposal when it was submitted last fall and his assistant Christie Price is helping plan the conference. Most events will take place in Magale Recital Hall and Orville Hanchey Gallery, but the conference will also

include tours of historic Natchitoches, a riverboat ride and a reception in Beau Jardin.

Joy said that because several NSU faculty are presenting at the May 2020 conference, she hopes that will serve as an invitation to participate in next year's conference.

"It's a great honor and opportunity for NSU to host this. It's not a large conference. There are usually about 100 attendees, but they come from universities across the U.S. and the world. We will have the opportunity to show off the town and NSU," Joy said.

Phi Beta Delta's goals are to increase the recognition, credibility and importance of the international experience and create a catalyst for international academic-based programming on college campuses while providing support and recognition to those individuals on campuses who are involved in international endeavors.

Phi Beta Delta's 2020 conference will be an online conference May 14-15 and was planned as a virtual event prior to the COVID-19 pandemic.

For more information on the 2021 Phi Beta Delta conference, contact Joy at joys@nsula.edu or (318) 357-5754.

Order your copy (or two) of NSU's cookbook 'In Good Taste' online

Northwestern State University First Lady **Jennifer Maggio** is introducing the second edition of "In Good Taste," the popular cookbook produced by the Campus Women's Organization in 1989.

The 2020 edition of "In Good Taste," features an updated cover design by NSU's retiring Director of Publications Beth Mann and recipes from recent first ladies Brenda Webb, Tonia Henderson and Maggio. NSU alumna Cheryl Gianforte designed the original cover and produced the drawings found within the cookbook.

"Thirty years ago, the NSU Campus Women's

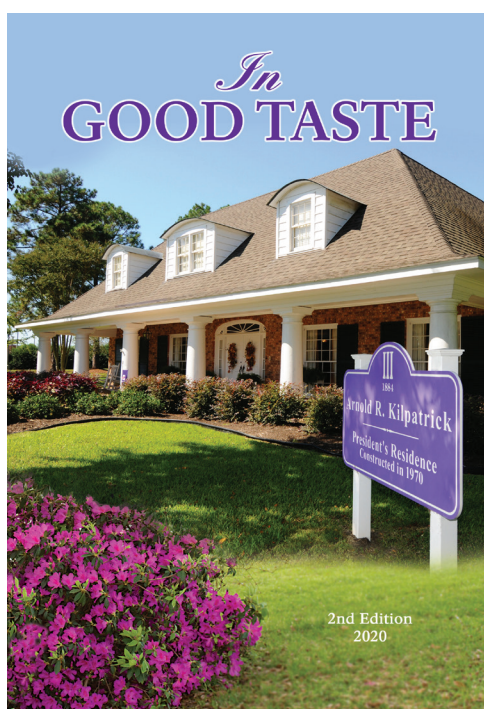
Club created the cookbook, 'In Good Taste.' This was the heartfelt labor of so many

NSU faculty, staff and alumni. It is full of amazing recipes," Maggio said. "I received the

cookbook as a wedding gift many years ago. You can see which recipes are my favorite by the food stains on the pages. We hope to continue the legacy of the Campus Women's Club with this second edition printing."

The cookbook is available for purchase online at <http://www.northwesternstatealumni.com/ingoodtaste/> at an introductory cost of \$25 with a \$3 shipping and handling fee.

Proceeds will support scholarships for NSU students and academic programs.





Format of Louisiana Studies Conference may change

The Louisiana Folklife Center and Northwestern State University have high hopes that this year's Louisiana Studies Conference will be able to be held in person on its scheduled dates of Sept. 18-19. The conference committee is closely monitoring the ongoing pandemic and is aware that uncertainties related to the continued impact of COVID-19 might potentially necessitate altering plans for the 2020 Conference.

In the event that a face-to-face conference is not a viable option, the conference will shift to a virtual delivery format via WebEx. In a WebEx format the conference would be held on Sept. 19 and Sept. 26 with individually consecutive presentation sessions rather than the usual concurrent sessions. Presenters will be given notice via email by Aug.

18 confirming whether the conference will be a face-to-face or virtual event.

The committee is now accepting presentation proposals for the upcoming conference. The 2020 theme, "Losing Louisiana," is dedicated to exploring the ways in which Louisiana's cultures, environment, languages and peoples are facing threats to their survival on a variety of fronts. What dangers do these threats pose to people, culture, and the environment? What solutions might be implemented to counter these threats? How can Louisiana pull back from the brink of disaster? Presentation proposals on any aspect of this theme, as well as creative texts and performances by, about, and/or for Louisiana and Louisianans, are sought for this year's conference.

"Although we are

especially interested in proposals that deal with the theme of 'Losing Louisiana,' all papers, creative writing and short performances (dance, music, or theatric) that address any aspect of Louisiana studies are welcome," said **Dr. Shane Rasmussen**, conference chair.

Proposals are being solicited for 15-minute presentations from scholars at all career stages as well as graduate students. Creative work (film, creative non-fiction, short fiction, and poetry) is welcome. Undergraduates are invited to submit, provided they are working with the guidance of a trained scholar. All undergraduate presenters under 18 years of age must be accompanied to the conference by a parent or legal guardian. Conference registration is

Continued on Page 7

Louisiana Studies Conference ... Continued from Page 6

free for all faculty, staff and students affiliated with Bossier Parish Community College, the Louisiana Scholars' College, the Louisiana School for Math, Science and the Arts, the National Center for Preservation Technology and Training, and Northwestern State University, as well as State and National Park Service personnel situated in Natchitoches Parish.

Abstracts (300 words max.) for scholarly proposals, creative writing, films and short performances (dance, music or theatric) should be sent as e-mail attachments to Rasmussen at rasmussens@nsula.edu. Presentations should run no longer than 15 minutes. Applicants should briefly detail the audio / visual tools (laptop, projection screen, data projector, DVD player, etc.) or space (the stage in the Magale Recital Hall will be provided for short performances) each presentation will require, if any.

Applicants should also include a separate cover page with your name, affiliation, mailing and e-mail address and the title of your presentation. E-mails should be entitled Louisiana Studies Conference Submission. Each submission will receive an e-mail acknowledgement within one week of having received it. Those who do not receive an acknowledgment should resend their submission.

The deadline for submissions is July 1. Accepted presenters will be notified via e-mail by July 15, if not before.

The interdisciplinary conference will be accept proposals from the following disciplines: American studies, anthropology, architecture, archival studies, communications, craft, creative writing, criminal justice, cultural studies, cultural tourism, dance, design, education, English and literary studies, environmental studies, ethnic studies, fashion design, film studies, fine arts, folklore, gender studies, geography, heritage resources, history, interior design, journalism, linguistics, media studies, museum studies, musicology, music performance, philosophy, photography, political science, preservation studies, psychology, queer studies, religious studies, Romance languages, social work, sociology, theatre and vernacular architecture.

Read broadly, scholars could consider the following possibilities for presentation topics relating to the theme "Losing Louisiana." Louisiana, its cultures, history, literature, peoples, places, etc. should be an intrinsic aspect of the proposed presentation. For example, "thematic

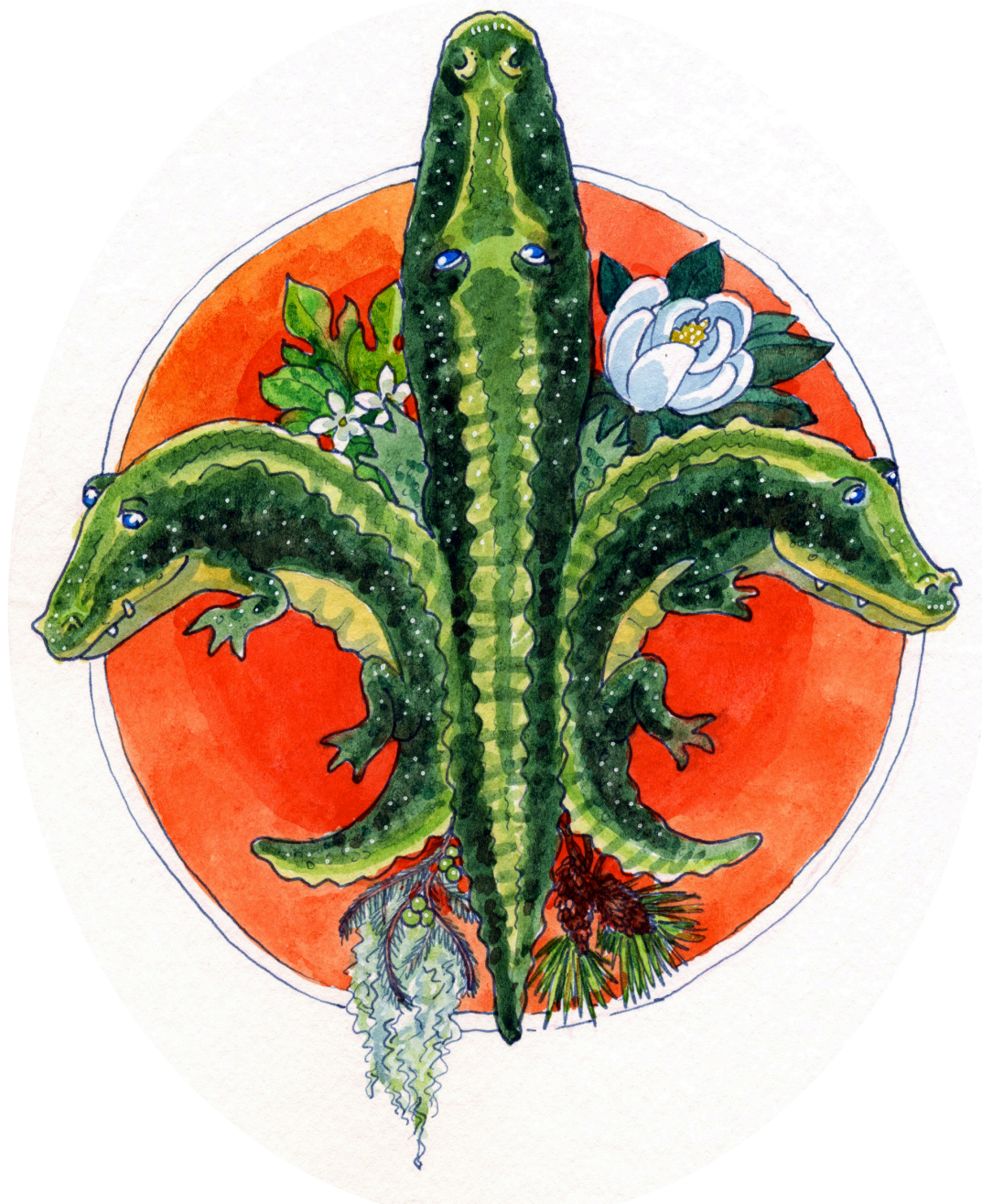
motifs in Southern literature" in itself would not be an appropriate presentation topic proposal for the Louisiana Studies Conference, while "thematic motifs in 21st century Louisiana short fiction" or "thematic motifs in the contemporary legends of Evangeline Parish" would both be highly appropriate.

The following list of suggestions is not meant to be comprehensive: archaeology, architecture (including vernacular architecture), archives, borders. the brain drain crisis, built environments, cemeteries and graveyards, climate change, coastal erosion, conservation, COVID-19, crafts, cultural drift, dancehalls, disruptions, documentation, economies (including cultural economies), ethnicities, foodways and folkways – past, present, evolving; frontiers (cultural, geographic, musical, mythic, narrative, etc.), historical landmarks and sites, language loss, legacies, literatures, Louisianan identities, main streets, monuments, murals, Native American spaces, the Neutral Strip, pandemics (preparedness, responses, effects, etc.), preservation, quarantines, raising consciousness, religion and spirituality, solutions, state and national parks, traditions and unsustainability.

A selection of scholarly and creative work presented at the conference will be solicited for publication in the "Louisiana Folklife Journal," a peer reviewed academic journal produced by the Louisiana Folklife Center and edited by Rasmussen. Additional information is available on the website for the Louisiana Folklife Center at Northwestern State University: <https://louisianafolklife.nsula.edu/>

Conference co-chairs are **Dr. Lisa Abney**, faculty facilitator for Academic Research and Community College Outreach and professor of English at NSU; Jason Church, materials conservator at the National Center for Preservation Technology and Training; **Dr. Charles Pellegrin**, professor of history and director of the Southern Studies Institute at NSU; Rasmussen, director of the Louisiana Folklife Center and professor of English at NSU, and **Sharon Wolff**, CA, assistant archivist at NSU's Cammie G. Henry Research Center.

The conference is co-sponsored by the Louisiana Folklife Center, the Northwestern State University Department of Fine + Graphic Arts and the Northwestern State University College of Arts, Sciences, Graduate Studies and Research.



Folk Festival format uncertain for 2020, but t-shirts available

The Natchitoches-Northwestern State University Folk Festival, a perennially popular event held each July at NSU since 1979, will not take place in its traditional format, according to **Dr. Shane Rasmussen**, director of the Louisiana Folklife Center.

“The Louisiana Folklife Center has been monitoring the ongoing COVID-19 pandemic very closely and has postponed making a decision about the 2020 festival in hopes that the situation would improve. However, it is with a great deal of sadness that unfortunately this year’s Natchitoches-NSU Folk Festival will not be able to be held in a face-to-face format,”

Rasmussen said. “The Louisiana Folklife Center is exploring options for virtual ways to celebrate Louisiana’s rich folk cultures this year. More information will be coming soon.”

Although plans for the festival remain uncertain, the 2020 Natchitoches-NSU Folk Festival t-shirt will be available soon. The t-shirt was designed by **Matt DeFord**, coordinator of NSU’s Department of Fine and Graphic Art, with the theme “Vive la Louisiane!” The shirts will be available through the Louisiana Folklife Center website and the LFC Facebook page soon.

For more information, contact Rasmussen at rasmussens@nsula.edu or (318) 357-4332.