



Excerpts from 2019-2020 Fact Book

Complete document available at <http://nsula.edu/oir/factbook>.

Excerpts include data relevant to School of Education (or former Department of Teaching, Leadership, and Counseling).

Fall Enrollment by Age, Gender and Year

Age Group	Gender	Fall Semester					
		2014	2015	2016	2017	2018	2019
20 and Under	Female	2523	2683	2947	3246	3497	3457
	Male	1370	1420	1491	1649	1763	1693
	Total	3893	4103	4438	4895	5260	5150
	% of Grand Total	43.25%	44.70%	45.20%	46.30%	47.91%	47.25%
21 - 24	Female	1221	1283	1373	1450	1488	1548
	Male	680	737	736	709	690	716
	Total	1901	2020	2109	2159	2178	2264
	% of Grand Total	21.12%	22.01%	21.48%	20.42%	19.84%	20.77%
25 and Up	Female	2476	2364	2549	2750	2838	2847
	Male	732	692	723	768	703	639
	Total	3208	3056	3272	3518	3541	3486
	% of Grand Total	35.64%	33.29%	33.32%	33.28%	32.25%	31.98%
Grand Total		9002	9179	9819	10572	10979	10900

For consistency across years of the Fact Book, only 14th day census students enrolled in 16-week and A term courses are reported.

Fall Enrollment by College, Gender and Year

College	Gender	Fall Semester					
		2014	2015	2016	2017	2018	2019
Arts and Sciences	Female	2084	2149	2322	2470	2612	2543
	Male	1458	1508	1536	1616	1668	1580
	Total	3542	3657	3858	4086	4280	4123
Education and Human Development	Female	1742	1714	1812	1907	1971	1894
	Male	539	535	546	585	551	519
	Total	2281	2249	2358	2492	2522	2413
Nursing & School of Allied Health	Female	1864	1888	2085	2388	2581	2744
	Male	313	315	340	360	354	384
	Total	2177	2203	2425	2748	2935	3128
Business and Technology	Female	530	579	650	681	659	671
	Male	472	491	528	565	583	565
	Total	1002	1070	1178	1246	1242	1236

NOTE: Colleges based on the college in which the major is currently located.

Criminal Justice, History, and Social Sciences (Cont.)	256D	UPSA - PUBLIC FACILITIES MGT.	0	0	0	3	6	9
	258	RESOURCE MANAGEMENT	0	0	7	5	2	0
	258A	HUMAN RESOURCE MANAGEMENT	0	0	15	20	24	15
	258B	INDUSTRIAL TECH-MANUF MGT	0	0	0	4	3	2
	258C	PUBLIC SAFETY MANAGEMENT	0	0	2	2	2	1
	258E	ENVIRONMENTAL SCIENCE	0	0	1	2	1	1
	258F	HEALTH SCIENCE ADMINISTRATION	0	0	0	0	3	2
	260	ORGANIZATIONAL LEADERSHIP	2	1	0	0	0	0
	260A	ORG. LDRSHP. - UPSA	8	2	0	0	0	0
	261	HISTORY	79	48	63	78	78	76
	579	HOMELAND SECURITY	36	40	37	45	30	37
	735	CRIMINAL JUSTICE	9	5	2	0	0	0
		Total	544	519	531	573	530	509
Education	010	LEVEL 1 ED LEADER - ALT. PATH.	11	16	8	10	13	10
	013	SP ED M/MOD FOR ELEM ED GR 1-5	10	8	10	9	8	10
	014	SP ED M/MOD FOR MIDDLE SCH 4-8	0	3	3	1	3	6
	015	SP ED M/MOD FOR SEC ED GR 6-12	4	6	8	4	4	4
	016	GIFTED EDUCATION	16	22	12	10	10	13
	017	SPEC ED-EARLY INTERV: BIRTH-5	2	6	2	2	6	10
	018	COUNSELING GR K - 12	1	0	0	0	0	0
	019	ELEMENTARY EDUCATION GR 1 - 5	15	18	16	5	3	1
	020	MIDDLE SCHOOL EDUCATION GR 4-8	5	9	7	1	3	2
	021	SECONDARY EDUCATION GR 6 - 12	13	9	16	7	5	2
	022	EDUC. TECHNOLOGY LEADERSHIP	0	2	0	1	1	1
	023	SCHOOL LIBRARIAN	6	23	12	19	19	12
	023U	SCHOOL LIBRARIAN - UNDERGRAD.	12	15	14	8	7	8
	024	EDUCATIONAL DIAGNOSTICIAN	6	8	9	12	16	17
	025	ENGLISH AS A SECOND LANGUAGE	2	4	1	1	1	4
	026	READING SPECIALIST	5	7	1	1	1	1
	137	CHILD & FAMILY STUDIES	0	0	0	18	21	17
	137C	FACS - CONSUMER SERVICES	0	0	0	0	3	10

Education (Cont.)	137E	FACS - CHILD DEV. & FAM. REL.	0	0	0	23	115	135
	137F	CFS - FAMILY LIFE EDUCATION	0	0	0	0	0	7
	138	FAMILY AND CONSUMER SCIENCES	29	14	15	8	2	0
	138C	FACS - CONSUMER SERVICES	10	4	9	5	1	0
	138E	FACS - CHILD DEV. & FAM. REL.	100	91	113	96	44	15
	3101	EARLY CHILDHOOD ED (PRE-K - 3)	93	71	96	93	98	85
	3102	ELEMENTARY EDUCATION	133	125	116	120	110	98
	3106	BUSINESS EDUCATION	1	0	0	0	0	0
	3109	MATHEMATICS EDUCATION	1	1	0	0	0	0
	3115	SOCIAL STUDIES EDUCATION	2	1	0	0	0	0
	320	SEC. EDUC. & TEACHING	30	28	34	55	39	12
	320B	SEC. EDUC. - BIOLOGY EDUC.	7	5	9	9	7	11
	320E	SEC. EDUC. - ENGLISH EDUC.	21	19	19	26	27	32
	320M	SEC. EDUC. - MATHEMATICS EDUC.	17	14	13	13	20	20
	320S	SEC. ED. - SOCIAL STUDIES EDUC	32	34	35	27	41	45
	320U	SEC. EDUC. - BUSINESS EDUC.	4	3	2	3	5	4
	327	MUSIC EDUC. - INSTRUMENTAL	102	109	100	118	112	114
	328	MUSIC EDUC. - VOCAL	30	24	19	22	28	22
	329	MUSIC ED. - VOCAL/INSTRUMENTAL	20	14	17	8	4	3
	500A	ADD-ON CERTIFICATION	1	0	0	1	0	0
	501	TEACHER CERTIFICATION	2	0	2	2	0	0
	502	EDUCATIONAL TECH. LEADERSHIP	14	12	9	0	0	1
	502A	EETC LDRSHP - LDRSHP FOR K-12	10	15	16	24	23	17
	502B	EETC LDRSHP - WORKFORCE DEV	9	6	11	10	7	7
	503	EDUCATIONAL LEADERSHIP	42	48	44	61	72	59
	504C	CURR. & INSTR. - ENGLISH EDUC.	1	1	1	3	4	3
	504E	CURR. & INSTR. - READING	10	7	12	16	26	23
	504G	CURR & INSTR - P.T.S.F.T.T.L.	3	4	4	5	5	4
	504H	CURR. & INST. - SCHOOL LIBR.	8	8	7	9	7	10
	504I	CURR. & INST. - TRAN. TO TEACH	5	2	1	2	1	2
	504J	CURR. & INST. - ENGL. AS A SEC. LANG.	0	0	1	1	2	1

Education (Cont.)	506A	MAT - ELEM. EDUC. - PROF. STUD	32	28	31	23	17	23
	507A	MAT - MID. EDUC. - PROF. STUD.	22	21	24	28	26	30
	508A	MAT - SEC. EDUC. - PROF. STUD.	55	45	40	51	39	28
	510	ADULT EDUCATION	3	0	0	0	0	0
	510A	ADULT EDUC - CONTINUING EDUC.	19	9	0	0	0	0
	510B	ADULT EDUC - HOMELAND SECURITY	11	5	1	0	0	0
	510C	ADULT EDUC - E-LEARNING	1	0	0	0	0	0
	524A	SPECIAL EDUC. - GIFTED EDUC.	26	25	23	26	24	19
	524B	SPEC. EDUC. - MILD/MOD SPEC ED	0	0	0	0	0	3
	524C	SPEC ED - EARLY INTERVENTION	4	4	7	11	7	13
	524D	SP. ED. - ELEM. M/M SPEC. ED.	17	17	14	19	13	9
	524E	SP. ED. - M.S. & SEC. M/M SPED	6	13	13	7	9	0
	531	ELEM. EDUC. & SPECIAL EDUC.	9	6	1	0	0	0
	531A	ELEM. ED & SP. ED. - PROF. ST.	13	26	32	30	21	25
	533	COUNSELING	7	4	0	1	2	1
	533A	COUN. - CLINICAL MENTAL HEALTH	15	18	24	27	34	27
	533B	COUN. - SCHOOL COUNSELING	4	10	13	15	9	6
	541	MIDDLE SCHOOL EDUC & SPEC EDUC	4	4	4	2	2	0
	541A	M.S. ED. & SP. ED. - PROF. ST.	3	2	4	7	11	9
	545	ADULT LEARNING & DEVELOPMENT	0	2	1	1	0	0
	545A	AL&D - ADULT & WORKFORCE DEVELOPMENT	0	11	18	13	12	10
	545B	AL&D - HOMELAND SECURITY	0	7	7	5	3	3
	545C	AL&D - E-LEARNING	0	1	2	5	6	4
	545E	AL&D - ENGLISH	0	0	0	1	2	1
	547	EARLY CHILDHOOD EDUCATION	13	11	9	7	13	12
	548A	ECED - PROFESSIONAL STUDIES	45	37	37	32	24	22
	561	SEC EDUC & SPECIAL EDUC.	2	2	0	0	0	0
	561A	SEC. ED. & SP. ED. - PROF. ST.	3	2	6	10	8	4
	574	STUDENT AFFAIRS IN HIGHER ED.	38	33	42	45	47	44
	575	STUDENT PERSONNEL SERVICES	1	1	0	0	0	0
	582G	SPECIAL EDUCATION	15	8	11	9	9	5

Education (Cont.)	582H	EDUCATIONAL TECHNOLOGY	6	3	3	7	6	6
	582I	EDUCATIONAL LEADERSHIP	18	23	12	18	8	9
	601B	ADULT EDUCATION (PB)	0	0	2	4	2	0
	601C	ADULT EDUCATION (PM)	1	0	0	0	0	0
	925	ADULT LEARNING & DEVELOPMENT	0	0	0	0	1	1
	925A	COMMUNITY COLLEGE LEADERSHIP	0	0	0	14	21	26
	925B	ADULT LEARNING & WORKFORCE DEVELOPMENT	0	0	0	5	15	21
			Total	1238	1194	1205	1292	1315
Engineering Technology	044	PROJECT MANAGEMENT	0	0	0	1	0	1
	140	ENGINEERING TECHNOLOGY	0	0	2	6	6	5
	140A	ELECTRONICS	0	0	0	1	3	4
	140B	INDUSTRIAL	0	0	0	1	2	7
	140C	ADVANCED MANUFACTURING	0	0	0	2	11	12
	141	ELECTRONIC ENGINEERING TECH	51	45	42	43	38	14
	141A	ELEC. ENG. TECH. - ELECTRONICS	7	11	19	21	33	54
	141B	ELEC. ENG. TECH. - BIOMEDICAL	4	6	6	7	7	20
	141E	ELECT. ENG. TECH. - PRE-ENG.	1	1	0	0	0	1
	145	INDUSTRIAL ENGINEERING TECH.	97	129	143	147	137	110
			Total	160	192	212	229	237
English, Foreign Languages, and Cultural Studies	050	TESOL	0	1	1	1	0	1
	052	WRITING FOR BUS, INDUS, + TECH	0	0	0	1	1	0
	221	ENGLISH	29	12	21	23	25	18
	221A	ENGLISH - LITERATURE	3	6	7	10	10	10
	221B	ENGLISH - PROFESSIONAL WRITING	13	21	13	11	11	10
	221C	ENGL - FOLKLIFE/SOUTHERN CULT	1	0	0	0	2	1
	221D	ENGLISH - FILM STUDIES	1	3	1	2	5	9
	221E	ENGLISH - CREATIVE WRITING	0	0	0	0	0	2
	529A	ENGLISH - WRITING & LINGUISTIC	2	5	8	8	6	10
	529B	ENGLISH - LITERATURE	1	7	10	2	1	7
	529C	ENGLISH - FOLK/SOUTHERN CULT.	2	3	5	1	3	6
	529D	ENGLISH - ONLINE	56	28	15	2	0	0

Fall 2019 Report on Departmental Applicants, Admits, and Enrollees

Preparatory							
Department	# of Applicants	# of Admits	# of Enrollees*	App. To Admit	Admit to Enr.	App. To Enr.	
University Studies	1256	1256	1068	100.00%	85.03%	85.03%	
Undergraduates Excluding Preparatory							
Department	# of Applicants	# of Admits	# of Enrollees*	App. To Admit	Admit to Enr.	App. To Enr.	New Students**
Allied Health	290	206	120	71.03%	58.25%	41.38%	110
Biological and Physical Science	799	554	217	69.34%	39.17%	27.16%	206
Business	1026	647	318	63.06%	49.15%	30.99%	265
Creative and Performing Arts	366	250	112	68.31%	44.80%	30.60%	105
Criminal Justice, History, & S.S.	427	263	114	61.59%	43.35%	26.70%	103
Education	476	311	154	65.34%	49.52%	32.35%	136
English, Foreign Languages, and Cultural Studies	51	35	13	68.63%	37.14%	25.49%	11
Engineering Technology	278	159	55	57.19%	34.59%	19.78%	51
Health and Human Performance	308	187	73	60.71%	39.04%	23.70%	66
Mathematics	29	22	6	75.86%	27.27%	20.69%	6
Nursing	2211	1359	772	61.47%	56.81%	34.92%	645
Psychology	477	293	144	61.43%	49.15%	30.19%	118
Scholars	77	69	43	89.61%	62.32%	55.84%	43
Social Work	288	156	88	54.17%	56.41%	30.56%	73
University Studies	520	360	184	69.23%	51.11%	35.38%	101
Undergraduate Total	7623	4871	2413	63.90%	49.54%	31.65%	2039
Graduate Students							
Departments	# of Applicants	# of Admits	# of Enrollees*	App. To Admit	Admit to Enr.	App. To Enr.	New Students**
Allied Health	19	18	10	94.74%	55.56%	52.63%	10
Creative and Performing Arts	17	11	5	64.71%	45.45%	29.41%	5
Criminal Justice, History, & S.S.	29	17	15	58.62%	88.24%	51.72%	12
Education	252	173	126	68.65%	72.83%	50.00%	98
English, Foreign Languages, and Cultural Studies	24	17	17	70.83%	100.00%	70.83%	16
Graduate Studies	22	19	9	86.36%	47.37%	40.91%	6
Health and Human Performance	40	28	25	70.00%	89.29%	62.50%	24
Nursing	189	130	100	68.78%	76.92%	52.91%	92
Psychology	20	9	8	45.00%	88.89%	40.00%	7
Graduate Total	612	422	315	68.95%	74.64%	51.47%	270

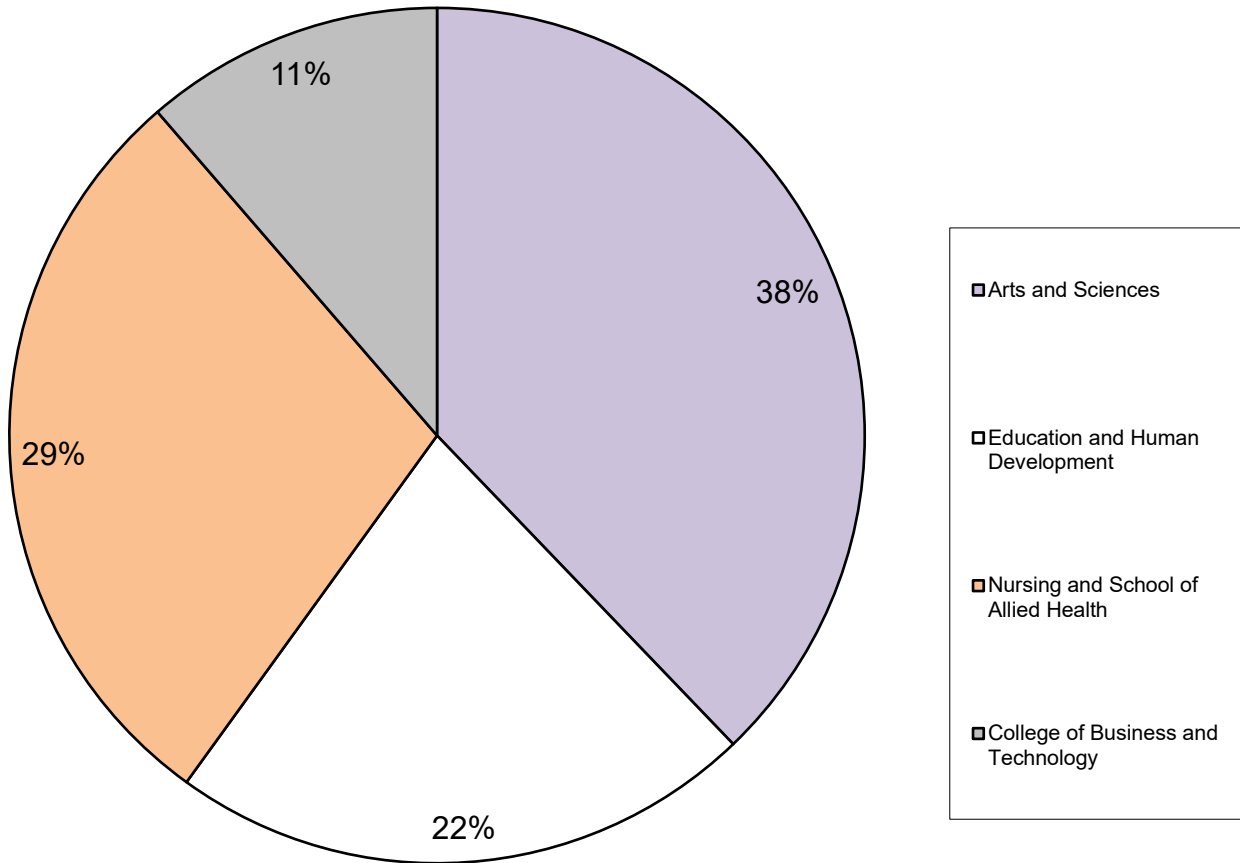
*Students may or may not be enrolled in the major of their application as of the 14th class day.

**New students include entering freshmen, entering SOs/JRs, transfer students, and new graduate students (GD, GN, or GT). The difference between the # of new students and the # of enrollees is the fact that new students excludes preparatory, special admit, readmit, and graduate readmit students and includes continuing entering freshmen from the summer.

Fall 2019 Enrollment by College

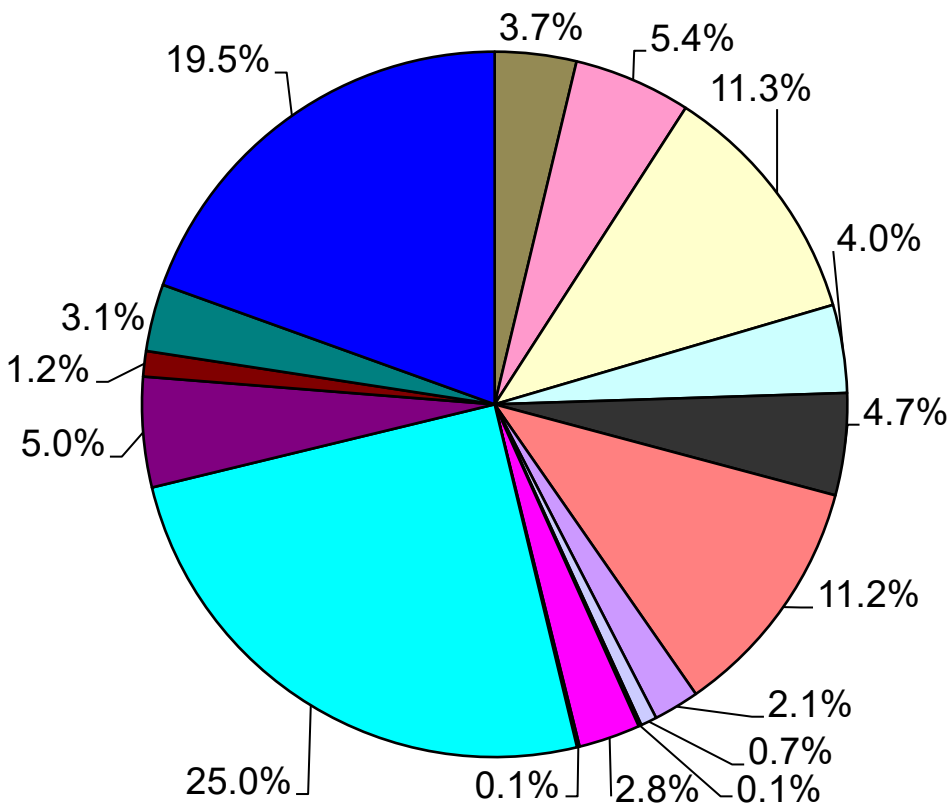
<u>College</u>	<u>Enrollment</u>	<u>Percentage</u>
Arts and Sciences	4,123	37.83%
Education and Human Development	2,413	22.14%
Nursing and School of Allied Health	3,128	28.70%
College of Business and Technology	1,236	11.34%
Grand Total	10,900	100.00%

Enrollment By College

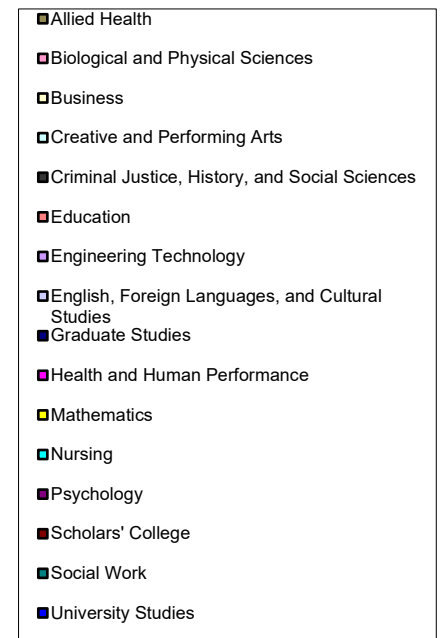


Fall 2019 Enrollment by College/Department/School

<u>Department/School</u>	<u>Enrollment</u>	<u>Percentage</u>
Allied Health	407	3.73%
Biological and Physical Sciences	586	5.38%
Business	1236	11.34%
Creative and Performing Arts	440	4.04%
Criminal Justice, History, and Social Sciences	509	4.67%
Education	1219	11.18%
Engineering Technology	228	2.09%
English, Foreign Languages, and Cultural Studies	81	0.74%
Graduate Studies	14	0.13%
Health and Human Performance	308	2.83%
Mathematics	13	0.12%
Nursing	2721	24.96%
Psychology	550	5.05%
Scholars' College	127	1.17%
Social Work	336	3.08%
University Studies	2125	19.50%
Grand Total	10900	100.00%



Enrollment by Department



Fall 2019 Average ACT Scores for Enrolled Students by Department/School

<u>Department/School</u>	<u>Composite</u>	<u>English</u>	<u>Math</u>	<u>Reading</u>	<u>Science</u>
Allied Health	20.06	21.00	18.92	21.29	20.71
Biological and Physical Sciences	22.39	23.36	20.83	23.99	22.80
Business	21.43	21.90	20.61	22.63	21.91
Creative and Performing Arts	22.68	24.16	20.66	24.47	22.64
Criminal Justice, History, and Social Sciences	20.53	20.99	18.92	22.28	20.99
Education	21.86	22.80	20.50	23.20	22.17
Engineering Technology	21.43	21.22	21.13	22.19	22.52
English, Foreign Languages, and Cultural Studies	23.24	25.70	20.26	25.57	22.85
Health and Human Performance	20.63	21.22	19.79	21.57	21.50
Mathematics	23.62	24.38	23.62	23.62	23.69
Nursing	20.99	21.81	19.81	22.14	21.46
Psychology	21.36	22.41	19.66	22.93	21.60
Scholars' College	28.84	30.79	26.03	31.22	28.22
Social Work	20.17	20.69	18.83	21.85	20.72
University Studies	22.25	22.72	20.83	23.67	22.30
University Average	21.65	22.40	20.33	23.02	22.00

Note: Only students who had ACT scores in all five areas were included in the calculation of the average. No SAT scores were converted.

Note: Only non-preparatory undergraduates are included in this table.

Fall 2019 Average ACT Scores for Entering Freshmen by Department/School

<u>Department/School</u>	<u>Composite</u>	<u>English</u>	<u>Math</u>	<u>Reading</u>	<u>Science</u>
Allied Health	20.12	20.82	18.92	21.92	20.73
Biological and Physical Sciences	21.87	22.99	20.22	23.65	22.46
Business	21.03	21.42	20.00	22.92	21.51
Creative and Performing Arts	22.62	24.21	20.64	24.20	22.59
Criminal Justice, History, and Social Sciences	20.32	21.12	18.85	22.41	20.84
Education	21.84	22.97	20.29	23.39	22.16
Engineering Technology	20.91	20.79	20.70	22.00	21.81
English, Foreign Languages, and Cultural Studies	23.30	24.50	21.00	25.80	22.40
Health and Human Performance	20.21	21.15	19.21	21.48	20.73
Mathematics	23.50	25.00	23.67	21.67	23.83
Nursing	20.70	21.50	19.69	22.15	21.12
Psychology	21.63	23.00	19.86	23.18	21.73
Scholars' College	28.36	30.60	25.33	31.10	27.64
Social Work	20.28	21.00	19.24	22.24	20.76
University Studies	20.67	21.20	19.30	21.83	21.24
University Average	21.36	22.27	20.03	22.98	21.74

Note: Only students who had ACT scores in all five areas were included in the calculation of the average. No SAT scores were converted.

Note: First-time sophomores are included.

Fall 2019 ACT Composite Scores by Department/School

Department/School	ACT Range						Total
	1 - 14	15 - 19	20 - 24	25 - 29	30 - 36	Unknown	
Allied Health	5	82	110	17	0	158	372
% within Dept.	1.34%	22.04%	29.57%	4.57%	0.00%	42.47%	100.00%
Biological and Physical Sciences	4	118	264	120	21	59	586
% within Dept.	0.68%	20.14%	45.05%	20.48%	3.58%	10.07%	100.00%
Business	7	242	413	125	25	424	1236
% within Dept.	0.57%	19.58%	33.41%	10.11%	2.02%	34.30%	100.00%
Creative and Performing Arts	4	67	157	92	18	80	418
% within Dept.	0.96%	16.03%	37.56%	22.01%	4.31%	19.14%	100.00%
Criminal Justice, History, and Social Sciences	7	123	162	42	0	138	472
% within Dept.	1.48%	26.06%	34.32%	8.90%	0.00%	29.24%	100.00%
Education	5	121	250	79	19	164	638
% within Dept.	0.78%	18.97%	39.18%	12.38%	2.98%	25.71%	100.00%
Engineering Technology	2	51	114	23	5	33	228
% within Dept.	0.88%	22.37%	50.00%	10.09%	2.19%	14.47%	100.00%
English, Foreign Languages, and Cultural Studies	0	8	22	14	2	4	50
% within Dept.	0.00%	16.00%	44.00%	28.00%	4.00%	8.00%	100.00%
Health and Human Performance	5	75	123	22	3	39	267
% within Dept.	1.87%	28.09%	46.07%	8.24%	1.12%	14.61%	100.00%
Mathematics	0	3	5	4	1	0	13
% within Dept.	0.00%	23.08%	38.46%	30.77%	7.69%	0.00%	100.00%
Nursing	35	466	841	187	24	882	2435
% within Dept.	1.44%	19.14%	34.54%	7.68%	0.99%	36.22%	100.00%
Psychology	8	118	194	72	5	133	530
% within Dept.	1.51%	22.26%	36.60%	13.58%	0.94%	25.09%	100.00%
Scholars' College	0	0	10	60	55	2	127
% within Dept.	0.00%	0.00%	7.87%	47.24%	43.31%	1.57%	100.00%
Social Work	7	70	86	12	3	158	336
% within Dept.	2.08%	20.83%	25.60%	3.57%	0.89%	47.02%	100.00%
University Studies	15	117	145	22	3	258	560
% within Dept.	2.68%	20.89%	25.89%	3.93%	0.54%	46.07%	100.00%
University	104	1661	2896	891	184	2532	8268
% within University	1.26%	20.09%	35.03%	10.78%	2.23%	30.62%	100.00%

Note: No SAT Scores were converted.

Note: Only non-preparatory undergraduates are included in this table.

Fall 2019 ACT English Scores by Department/School

Department/School	ACT Range						Total
	1 – 14	15 – 19	20 – 24	25 – 29	30 – 36	Unknown	
Allied Health	15	54	107	31	7	158	372
% within Dept.	4.03%	14.52%	28.76%	8.33%	1.88%	42.47%	100.00%
Biological and Physical Sciences	11	101	229	113	73	59	586
% within Dept.	1.88%	17.24%	39.08%	19.28%	12.46%	10.07%	100.00%
Business	26	215	379	136	56	424	1236
% within Dept.	2.10%	17.39%	30.66%	11.00%	4.53%	34.30%	100.00%
Creative and Performing Arts	8	46	135	88	60	81	418
% within Dept.	1.91%	11.00%	32.30%	21.05%	14.35%	19.38%	100.00%
Criminal Justice, History, and Social Sciences	29	87	152	55	11	138	472
% within Dept.	6.14%	18.43%	32.20%	11.65%	2.33%	29.24%	100.00%
Education	19	99	212	93	51	164	638
% within Dept.	2.98%	15.52%	33.23%	14.58%	7.99%	25.71%	100.00%
Engineering Technology	8	53	96	28	10	33	228
% within Dept.	3.51%	23.25%	42.11%	12.28%	4.39%	14.47%	100.00%
English, Foreign Languages, and Cultural Studies	1	4	15	15	11	4	50
% within Dept.	2.00%	8.00%	30.00%	30.00%	22.00%	8.00%	100.00%
Health and Human Performance	13	66	105	31	13	39	267
% within Dept.	4.87%	24.72%	39.33%	11.61%	4.87%	14.61%	100.00%
Mathematics	0	3	4	4	2	0	13
% within Dept.	0.00%	23.08%	30.77%	30.77%	15.38%	0.00%	100.00%
Nursing	54	387	756	267	88	883	2435
% within Dept.	2.22%	15.89%	31.05%	10.97%	3.61%	36.26%	100.00%
Psychology	13	94	180	73	37	133	530
% within Dept.	2.45%	17.74%	33.96%	13.77%	6.98%	25.09%	100.00%
Scholars' College	0	1	12	33	79	2	127
% within Dept.	0.00%	0.79%	9.45%	25.98%	62.20%	1.57%	100.00%
Social Work	14	56	82	22	5	157	336
% within Dept.	4.17%	16.67%	24.40%	6.55%	1.49%	46.73%	100.00%
University Studies	28	90	129	49	6	258	560
% within Dept.	5.00%	16.07%	23.04%	8.75%	1.07%	46.07%	100.00%
University	239	1356	2593	1038	509	2533	8268
% within University	2.89%	16.40%	31.36%	12.55%	6.16%	30.64%	100.00%

Note: No SAT scores were converted.

Note: Only non-preparatory undergraduates are included in this table.

Fall 2019 ACT Math Scores by College/Department/School

Department/School	ACT Range						Total
	1 - 14	15 - 19	20 - 24	25 - 29	30 - 36	Unknown	
Allied Health	5	132	68	9	0	158	372
% within Dept.	1.34%	35.48%	18.28%	2.42%	0.00%	42.47%	100.00%
Biological and Physical Sciences	10	225	186	101	5	59	586
% within Dept.	1.71%	38.40%	31.74%	17.24%	0.85%	10.07%	100.00%
Business	8	359	312	126	6	425	1236
% within Dept.	0.65%	29.05%	25.24%	10.19%	0.49%	34.39%	100.00%
Creative and Performing Arts	4	148	117	65	3	81	418
% within Dept.	0.96%	35.41%	27.99%	15.55%	0.72%	19.38%	100.00%
Criminal Justice, History, and Social Sciences	8	202	101	23	0	138	472
% within Dept.	1.69%	42.80%	21.40%	4.87%	0.00%	29.24%	100.00%
Education	9	228	150	79	8	164	638
% within Dept.	1.41%	35.74%	23.51%	12.38%	1.25%	25.71%	100.00%
Engineering Technology	4	67	86	34	4	33	228
% within Dept.	1.75%	29.39%	37.72%	14.91%	1.75%	14.47%	100.00%
English, Foreign Languages, and Cultural Studies		22	17	6	1	4	50
% within Dept.	0.00%	44.00%	34.00%	12.00%	2.00%	8.00%	100.00%
Health and Human Performance	2	127	76	21	2	39	267
% within Dept.	0.75%	47.57%	28.46%	7.87%	0.75%	14.61%	100.00%
Mathematics	0	2	5	6	0	0	13
% within Dept.	0.00%	15.38%	38.46%	46.15%	0.00%	0.00%	100.00%
Nursing	32	810	521	181	8	883	2435
% within Dept.	1.31%	33.26%	21.40%	7.43%	0.33%	36.26%	100.00%
Psychology	10	216	116	55		133	530
% within Dept.	1.89%	40.75%	21.89%	10.38%	0.00%	25.09%	100.00%
Scholars' College	0	3	38	63	21	2	127
% within Dept.	0.00%	2.36%	29.92%	49.61%	16.54%	1.57%	100.00%
Social Work	8	111	44	15	1	157	336
% within Dept.	2.38%	33.04%	13.10%	4.46%	0.30%	46.73%	100.00%
University Studies	9	188	81	24	0	258	560
% within Dept.	1.61%	33.57%	14.46%	4.29%	0.00%	46.07%	100.00%
University	109	2840	1918	808	59	2534	8268
% within University	1.32%	34.35%	23.20%	9.77%	0.71%	30.65%	100.00%

Note: No SAT Scores were converted.

Note: Only non-preparatory undergraduates are included in this table.

Fall 2019 Enrollment by Age Group and Department/School

Department/School	Age Group			Total
	20 and Under	21 - 24	25 and Up	
Allied Health	126	88	158	372
% within Dept.	33.87%	23.66%	42.47%	100.00%
Biological and Physical Sciences	403	141	42	586
% within Dept.	68.77%	24.06%	7.17%	100.00%
Business	495	296	445	1236
% within Dept.	40.05%	23.95%	36.00%	100.00%
Creative and Performing Arts	273	123	22	418
% within Dept.	65.31%	29.43%	5.26%	100.00%
Criminal Justice, History, and Social Sciences	201	128	143	472
% within Dept.	42.58%	27.12%	30.30%	100.00%
Education	299	194	145	638
% within Dept.	46.87%	30.41%	22.73%	100.00%
Engineering Technology	135	79	14	228
% within Dept.	59.21%	34.65%	6.14%	100.00%
English, Foreign Languages, and Cultural Studies	27	20	3	50
% within Dept.	54.00%	40.00%	6.00%	100.00%
Health and Human Performance	175	82	10	267
% within Dept.	65.54%	30.71%	3.75%	100.00%
Mathematics	10	3	0	13
% within Dept.	76.92%	23.08%	0.00%	100.00%
Nursing	920	515	1000	2435
% within Dept.	37.78%	21.15%	41.07%	100.00%
Psychology	233	152	145	530
% within Dept.	43.96%	28.68%	27.36%	100.00%
Scholars' College	94	33	0	127
% within Dept.	74.02%	25.98%	0.00%	100.00%
Social Work	93	81	162	336
% within Dept.	27.68%	24.11%	48.21%	100.00%
University Studies	100	178	282	560
% within Dept.	17.86%	31.79%	50.36%	100.00%
University	3584	2113	2571	8268
% within University	43.35%	25.56%	31.10%	100.00%

Note: Only non-preparatory undergraduates are included in this table.

Fall 2019 Enrollment by Classification and Department/School

Department/School	Classification							Total
	PR	EFR	FR	SO	JR	SR	GR	
Allied Health	0	62	18	54	70	168	35	407
% within Dept.	0.00%	15.23%	4.42%	13.27%	17.20%	41.28%	8.60%	100.00%
Biological and Physical Science	0	185	52	106	113	130	0	586
% within Dept.	0.00%	31.57%	8.87%	18.09%	19.28%	22.18%	0.00%	100.00%
Business	0	168	97	253	271	447	0	1236
% within Dept.	0.00%	13.59%	7.85%	20.47%	21.93%	36.17%	0.00%	100.00%
Creative and Performing Arts	0	90	25	93	84	126	22	440
% within Dept.	0.00%	20.45%	5.68%	21.14%	19.09%	28.64%	5.00%	100.00%
Criminal Justice, History, and Social Sciences	0	75	35	93	106	163	37	509
% within Dept.	0.00%	14.73%	6.88%	18.27%	20.83%	32.02%	7.27%	100.00%
Education	0	109	42	149	116	222	581	1219
% within Dept.	0.00%	8.94%	3.45%	12.22%	9.52%	18.21%	47.66%	100.00%
Engineering Technology	0	50	15	48	56	59	0	228
% within Dept.	0.00%	21.93%	6.58%	21.05%	24.56%	25.88%	0.00%	100.00%
English, Foreign Languages, and Cultural Studies	0	10	3	13	14	10	31	81
% within Dept.	0.00%	12.35%	3.70%	16.05%	17.28%	12.35%	38.27%	100.00%
Graduate Studies	0	0	0	0	0	0	14	14
% within Dept.	0.00%	0.00%	0.00%	0.00%	0.00%	0.00%	100.00%	100.00%
Health and Human Performance	0	53	37	67	40	70	41	308
% within Dept.	0.00%	17.21%	12.01%	21.75%	12.99%	22.73%	13.31%	100.00%
Mathematics	0	6	1	0	2	4	0	13
% within Dept.	0.00%	46.15%	7.69%	0.00%	15.38%	30.77%	0.00%	100.00%

Fall 2019 Enrollment by Classification and Department/School (Continued)

Department/School	Classification							Total
	PR	EFR	FR	SO	JR	SR	GR	
Nursing	0	424	243	528	501	739	286	2721
% within Dept.	0.00%	15.58%	8.93%	19.40%	18.41%	27.16%	10.51%	100.00%
Psychology	0	89	39	101	113	188	20	550
% within Dept.	0.00%	16.18%	7.09%	18.36%	20.55%	34.18%	3.64%	100.00%
Scholars' College	0	43	1	14	26	43	0	127
% within Dept.	0.00%	33.86%	0.79%	11.02%	20.47%	33.86%	0.00%	100.00%
Social Work	0	28	20	55	105	128	0	336
% within Dept.	0.00%	8.33%	5.95%	16.37%	31.25%	38.10%	0.00%	100.00%
University Studies	1565	48	87	92	114	219	0	2125
% within Dept.	73.65%	2.26%	4.09%	4.33%	5.36%	10.31%	0.00%	100.00%
University	1565	1440	715	1666	1731	2716	1067	10900
% within University	14.36%	13.21%	6.56%	15.28%	15.88%	24.92%	9.79%	100.00%

For consistency across years of the Fact Book, only 14th day census students enrolled in 16-week and A term courses are reported.

Fall 2019 Enrollment by Degree Sought and Department/School

Department/School	Degree Sought										Total
	Associate	Bachelor	PBC	Master's	PMC	Doctorate	Doctorate (Professional)	Specialist	GC	Non- Degree	
Allied Health	0	372	0	35	0	0	0	0	0	0	407
% within Dept.	0.00%	91.40%	0.00%	8.60%	0.00%	0.00%	0.00%	0.00%	0.00%	0.00%	100.00%
Biological and Physical Sciences	52	534	0	0	0	0	0	0	0	0	586
% within Dept.	8.87%	91.13%	0.00%	0.00%	0.00%	0.00%	0.00%	0.00%	0.00%	0.00%	100.00%
Business	0	1234	2	0	0	0	0	0	0	0	1236
% within Dept.	0.00%	99.84%	0.16%	0.00%	0.00%	0.00%	0.00%	0.00%	0.00%	0.00%	100.00%
Creative and Performing Arts	0	418	0	22	0	0	0	0	0	0	440
% within Dept.	0.00%	95.00%	0.00%	5.00%	0.00%	0.00%	0.00%	0.00%	0.00%	0.00%	100.00%
Criminal Justice, History, and Social Sciences	0	472	0	37	0	0	0	0	0	0	509
% within Dept.	0.00%	92.73%	0.00%	7.27%	0.00%	0.00%	0.00%	0.00%	0.00%	0.00%	100.00%
Education	0	630	91	420	10	48	0	20	0	0	1219
% within Dept.	0.00%	51.68%	7.47%	34.45%	0.82%	3.94%	0.00%	1.64%	0.00%	0.00%	100.00%
Engineering Technology	28	199	1	0	0	0	0	0	0	0	228
% within Dept.	12.28%	87.28%	0.44%	0.00%	0.00%	0.00%	0.00%	0.00%	0.00%	0.00%	100.00%
English, Foreign Languages, and Cultural Studies	0	50	0	30	0	0	0	0	1	0	81
% within Dept.	0.00%	61.73%	0.00%	37.04%	0.00%	0.00%	0.00%	0.00%	1.23%	0.00%	100.00%
Graduate Studies	0	0	0	0	0	0	0	0	0	14	14
% within Dept.	0.00%	0.00%	0.00%	0.00%	0.00%	0.00%	0.00%	0.00%	0.00%	100.00%	100.00%
Health and Human Performance	0	267	0	41	0	0	0	0	0	0	308
% within Dept.	0.00%	86.69%	0.00%	13.31%	0.00%	0.00%	0.00%	0.00%	0.00%	0.00%	100.00%
Mathematics	0	13	0	0	0	0	0	0	0	0	13
% within Dept.	0.00%	100.00%	0.00%	0.00%	0.00%	0.00%	0.00%	0.00%	0.00%	0.00%	100.00%

Fall 2019 Enrollment by Degree Sought and Department/School (Continued)

Department/School	Degree Sought										
	Associate	Bachelor	PBC	Master's	PMC	Doctorate	Doctorate (Professional)	Specialist	GC	Non- Degree	Total
Nursing	854	1581	0	235	12	0	39	0	0	0	2721
% within Dept.	31.39%	58.10%	0.00%	8.64%	0.44%	0.00%	1.43%	0.00%	0.00%	0.00%	100.00%
Psychology	0	530	0	20	0	0	0	0	0	0	550
% within Dept.	0.00%	96.36%	0.00%	3.64%	0.00%	0.00%	0.00%	0.00%	0.00%	0.00%	100.00%
Scholars' College	0	127	0	0	0	0	0	0	0	0	127
% within Dept.	0.00%	100.00%	0.00%	0.00%	0.00%	0.00%	0.00%	0.00%	0.00%	0.00%	100.00%
Social Work	0	336	0	0	0	0	0	0	0	0	336
% within Dept.	0.00%	100.00%	0.00%	0.00%	0.00%	0.00%	0.00%	0.00%	0.00%	0.00%	100.00%
University Studies	87	404	0	0	0	0	0	0	0	1634	2125
% within Dept.	4.09%	19.01%	0.00%	0.00%	0.00%	0.00%	0.00%	0.00%	0.00%	76.89%	100.00%
University	1021	7167	94	840	22	48	39	20	1	1648	10900
% within University	9.37%	65.75%	0.86%	7.71%	0.20%	0.44%	0.36%	0.18%	0.01%	15.12%	100.00%

For consistency across years of the Fact Book, only 14th day census students enrolled in 16-week and A term courses are reported.

Fall 2019 Enrollment by Distance Learning, Student Level, and Department/School

<u>Department/School</u>	<u>Undergraduates Taking Distance Learning Classes</u>		<u>Graduates Taking Distance Learning Classes</u>	
	<u>Taking</u>	<u>Not Taking</u>	<u>Taking</u>	<u>Not Taking</u>
Allied Health	353	19	35	0
% within Dept.	94.89%	5.11%	100.00%	0.00%
Biological and Physical Sciences	369	217	0	0
% within Dept.	62.97%	37.03%	N/A	N/A
Business	1093	143	0	0
% within Dept.	88.43%	11.57%	N/A	N/A
Creative and Performing Arts	189	229	9	13
% within Dept.	45.22%	54.78%	40.91%	59.09%
Criminal Justice, History, and Social Sciences	549	13	37	0
% within Dept.	97.69%	2.31%	100.00%	0.00%
Education	475	163	556	25
% within Dept.	74.45%	25.55%	95.70%	4.30%
Engineering Technology	121	107	0	0
% within Dept.	53.07%	46.93%	N/A	N/A
English, Foreign Languages, and Cultural Studies	21	29	31	0
% within Dept.	42.00%	58.00%	100.00%	0.00%
Graduate Studies	0	0	12	2
% within Dept.	N/A	N/A	85.71%	14.29%
Health and Human Performance	205	62	41	0
% within Dept.	76.78%	23.22%	100.00%	0.00%
Mathematics	5	8	0	0
% within Dept.	38.46%	61.54%	N/A	N/A
Nursing	2158	277	286	0
% within Dept.	88.62%	11.38%	100.00%	0.00%
Psychology	435	95	4	16
% within Dept.	82.08%	17.92%	20.00%	80.00%
Scholars' College	39	88	0	0
% within Dept.	30.71%	69.29%	N/A	N/A
Social Work	305	31	0	0
% within Dept.	90.77%	9.23%	N/A	N/A
University Studies	1699	426	0	0
% within Dept.	79.95%	20.05%	N/A	N/A
University	8016	1907	1011	56
% within Dept.	80.78%	19.22%	94.75%	5.25%

Note: A distance-learning course is considered an Internet, Compressed Video, or hybrid class.

Fall 2019 Enrollment by Student Level and Department/School

<u>Department/School</u>	<u>Student Level</u>			<u>Total</u>
	<u>Preparatory</u>	<u>Undergraduate</u>	<u>Graduate</u>	
Allied Health	0	372	35	407
% within Dept.	0.00%	91.40%	8.60%	100.00%
Biological and Physical Sciences	0	586	0	586
% within Dept.	0.00%	100.00%	0.00%	100.00%
Business	0	1236	0	1236
% within Dept.	0.00%	100.00%	0.00%	100.00%
Creative and Performing Arts	0	418	22	440
% within Dept.	0.00%	95.00%	5.00%	100.00%
Criminal Justice, History, and Social Sciences	0	472	37	509
% within Dept.	0.00%	92.73%	7.27%	100.00%
Education	0	638	581	1219
% within Dept.	0.00%	52.34%	47.66%	100.00%
Engineering Technology	0	228	0	228
% within Dept.	0.00%	100.00%	0.00%	100.00%
English, Foreign Languages, and Cultural Studies	0	50	31	81
% within Dept.	0.00%	61.73%	38.27%	100.00%
Graduate Studies	0	0	14	14
% within Dept.	0.00%	0.00%	100.00%	100.00%
Health and Human Performance	0	267	41	308
% within Dept.	0.00%	86.69%	13.31%	100.00%
Mathematics	0	13	0	13
% within Dept.	0.00%	100.00%	0.00%	100.00%
Nursing	0	2435	286	2721
% within Dept.	0.00%	89.49%	10.51%	100.00%
Psychology	0	530	20	550
% within Dept.	0.00%	96.36%	3.64%	100.00%
Scholars' College	0	127	0	127
% within Dept.	0.00%	100.00%	0.00%	100.00%
Social Work	0	336	0	336
% within Dept.	0.00%	100.00%	0.00%	100.00%
University Studies	1565	560	0	2125
% within Dept.	73.65%	26.35%	0.00%	100.00%
University	1565	8268	1067	10900
% within University	14.36%	75.85%	9.79%	100.00%

Fall 2019 Enrollment by Ethnicity, Gender, and Department/School

Department/School	Gender	Ethnic Description									Total
		American Indian or Alaskan Native	Asian	Black, non-Hispanic	Hispanic	Foreign/ Non-Resident Alien	Native Hawaiian or Other Pacific Islander	Two or More Races	White, Non-Hispanic	Unknown	
Allied Health	Female	7	4	110	20	1	1	14	183	7	347
	Male	3	2	13	5	0	0	2	33	2	60
	Total	10	6	123	25	1	1	16	216	9	407
Biological and Physical Sciences	Female	9	3	152	33	2	0	20	219	3	441
	Male	2	1	33	13	1	0	5	88	2	145
	Total	11	4	185	46	3	0	25	307	5	586
Business	Female	7	4	207	32	13	0	32	367	9	671
	Male	3	7	138	49	16	2	24	316	10	565
	Total	10	11	345	81	29	2	56	683	19	1236
Creative and Performing Arts	Female	3	3	55	15	20	0	10	139	1	246
	Male	0	1	57	23	26	0	6	80	1	194
	Total	3	4	112	38	46	0	16	219	2	440
Criminal Justice, History, and Social Sciences	Female	1	2	110	12	2	1	9	160	4	301
	Male	7	1	61	10	0	0	10	118	1	208
	Total	8	3	171	22	2	1	19	278	5	509
Education	Female	11	4	233	54	12	2	17	634	10	977
	Male	3	0	46	25	10	0	3	152	3	242
	Total	14	4	279	79	22	2	20	786	13	1219
Engineering Technology	Female	0	0	12	3	0	0	2	8	0	25
	Male	5	0	72	15	3	0	13	94	1	203
	Total	5	0	84	18	3	0	15	102	1	228
English, Foreign Languages, and Cultural Studies	Female	0	0	7	3	0	0	3	42	1	56
	Male	0	1	5	3	0	0	3	13	0	25
	Total	0	1	12	6	0	0	6	55	1	81
Graduate Studies	Female	0	0	1	0	0	0	0	9	0	10
	Male	0	0	0	0	0	0	0	4	0	4
	Total	0	0	1	0	0	0	0	13	0	14
Health and Human Performance	Female	1	0	53	7	4	0	12	71	0	148
	Male	2	1	75	8	6	1	10	56	1	160
	Total	3	1	128	15	10	1	22	127	1	308

Fall 2019 Enrollment by Ethnicity, Gender, and College/Department/School (Continued)

Department/School	Gender	Ethnic Description									Total
		American Indian or Alaskan Native	Asian	Black, non-Hispanic	Hispanic	Foreign/ Non-Resident Alien	Native Hawaiian or Other Pacific Islander	Two or More Races	White, Non-Hispanic	Unknown	
Mathematics	Female	0	0	2	1	0	0	0	2	0	5
	Male	0	0	3	0	0	0	0	5	0	8
	Total	0	0	5	1	0	0	0	7	0	13
Nursing	Female	33	36	805	143	10	1	94	1248	27	2397
	Male	4	1	68	23	2	0	20	201	5	324
	Total	37	37	873	166	12	1	114	1449	32	2721
Psychology	Female	5	3	172	18	4	2	29	213	6	452
	Male	1	0	42	7	1	0	4	43	0	98
	Total	6	3	214	25	5	2	33	256	6	550
Scholars' College	Female	1	1	6	17	0	0	2	68	1	96
	Male	0	0	4	3	0	0	3	20	1	31
	Total	1	1	10	20	0	0	5	88	2	127
Social Work	Female	5	0	129	11	3	0	17	147	5	317
	Male	0	0	7	1	0	0	1	8	2	19
	Total	5	0	136	12	3	0	18	155	7	336
University Studies	Female	12	19	191	81	4	2	58	972	24	1363
	Male	8	16	119	36	5	2	44	517	15	762
	Total	20	35	310	117	9	4	102	1489	39	2125
University	Female	95	79	2245	450	75	9	319	4482	98	7852
	Male	38	31	743	221	70	5	148	1748	44	3048
	Total	133	110	2988	671	145	14	467	6230	142	10900

For consistency across years of the Fact Book, only 14th day census students enrolled in 16-week and A term courses are reported.

Fall 2019 Enrollment by Full-Time/Part-Time Status, Student Level, and Department/School

Department/School	Undergraduates		Graduates	
	Full-time	Part-time	Full-time	Part-time
Allied Health	249	123	2	33
% within Dept.	66.94%	33.06%	5.71%	94.29%
Biological and Physical Science	534	52	0	0
% within Dept.	91.13%	8.87%	N/A	N/A
Business	941	295	0	0
% within Dept.	76.13%	23.87%	N/A	N/A
Creative and Performing Arts	404	14	14	8
% within Dept.	96.65%	3.35%	63.64%	36.36%
Criminal Justice, History, and Social Sciences	370	102	17	20
% within Dept.	78.39%	21.61%	45.95%	54.05%
Education	561	77	77	504
% within Dept.	87.93%	12.07%	13.25%	86.75%
Engineering Technology	211	17	0	0
% within Dept.	92.54%	7.46%	N/A	N/A
English, Foreign Languages, and Cultural Studies	47	3	10	21
% within Dept.	94.00%	6.00%	32.26%	67.74%
Graduate Studies	0	0	1	13
% within Dept.	N/A	N/A	7.14%	92.86%
Health and Human Performance	254	13	37	4
% within Dept.	95.13%	4.87%	90.24%	9.76%
Mathematics	13	0	0	0
% within Dept.	100.00%	0.00%	N/A	N/A
Nursing	1453	982	13	273
% within Dept.	59.67%	40.33%	4.55%	95.45%
Psychology	447	83	18	2
% within Dept.	84.34%	15.66%	90.00%	10.00%
Scholars' College	127	0	0	0
% within Dept.	100.00%	0.00%	N/A	N/A
Social Work	258	78	0	0
% within Dept.	76.79%	23.21%	N/A	N/A
University Studies	471	1654	0	0
% within Dept.	22.16%	77.84%	N/A	N/A
University	6340	3493	189	878
% within University	64.48%	35.52%	17.71%	82.29%

Fall 2019 Enrollment by Home Campus and Department/School

Department/School	Home Campus					Total
	Alexandria	Leesville	Natchitoches	Shreveport	Other*	
Allied Health	13	3	109	35	247	407
% within Dept.	3.19%	0.74%	26.78%	8.60%	60.69%	100.00%
Biological and Physical Sciences	0	2	495	0	89	586
% within Dept.	0.00%	0.34%	84.47%	0.00%	15.19%	100.00%
Business	3	11	546	0	676	1236
% within Dept.	0.24%	0.89%	44.17%	0.00%	54.69%	100.00%
Creative and Performing Arts	0	0	417	0	23	440
% within Dept.	0.00%	0.00%	94.77%	0.00%	5.23%	100.00%
Criminal Justice, History, and Social Sciences	2	10	199	0	298	509
% within Dept.	0.39%	1.96%	39.10%	0.00%	58.55%	100.00%
Education	1	5	438	0	775	1219
% within Dept.	0.08%	0.41%	35.93%	0.00%	63.58%	100.00%
Engineering Technology	0	0	214	0	14	228
% within Dept.	0.00%	0.00%	93.86%	0.00%	6.14%	100.00%
English, Foreign Languages, and Cultural Studies	0	0	45	0	36	81
% within Dept.	0.00%	0.00%	55.56%	0.00%	44.44%	100.00%
Graduate Studies	0	0	3	0	11	14
% within Dept.	0.00%	0.00%	21.43%	0.00%	78.57%	100.00%
Health and Human Performance	1	3	231	0	73	308
% within Dept.	0.32%	0.97%	75.00%	0.00%	23.70%	100.00%
Mathematics	0	0	12	0	1	13
% within Dept.	0.00%	0.00%	92.31%	0.00%	7.69%	100.00%
Nursing	244	163	615	586	1113	2721
% within Dept.	8.97%	5.99%	22.60%	21.54%	40.90%	100.00%
Psychology	1	4	250	0	295	550
% within Dept.	0.18%	0.73%	45.45%	0.00%	53.64%	100.00%
Scholars' College	0	0	124	2	1	127
% within Dept.	0.00%	0.00%	97.64%	1.57%	0.79%	100.00%
Social Work	5	1	87	0	243	336
% within Dept.	1.49%	0.30%	25.89%	0.00%	72.32%	100.00%
University Studies	7	17	482	1	1618	2125
% within Dept.	0.33%	0.80%	22.68%	0.05%	76.14%	100.00%
University	277	219	4267	624	5513	10900
% within University	2.54%	2.01%	39.15%	5.72%	50.58%	100.00%

* Figures for "Other" locations include Preparatory students and online students as well as Marksville, Barksdale, BPCC, and DeRidder locations.

For consistency across years of the Fact Book, only 14th day census students enrolled in 16-week and A term courses are reported.

Fall 2019 Enrollment by Home Parish and Department/School

Department/School	Home Parish						Total
	Bossier	Caddo	Natchitoches	Rapides	Vernon	Other	
Allied Health	38	76	21	37	16	219	407
% within Dept.	9.34%	18.67%	5.16%	9.09%	3.93%	53.81%	100.00%
Biological and Physical Science	47	77	46	61	31	324	586
% within Dept.	8.02%	13.14%	7.85%	10.41%	5.29%	55.29%	100.00%
Business	68	80	140	130	74	744	1236
% within Dept.	5.50%	6.47%	11.33%	10.52%	5.99%	60.19%	100.00%
Creative and Performing Arts	31	26	34	41	14	294	440
% within Dept.	7.05%	5.91%	7.73%	9.32%	3.18%	66.82%	100.00%
Criminal Justice, History, and Social Sciences	36	40	45	58	44	286	509
% within Dept.	7.07%	7.86%	8.84%	11.39%	8.64%	56.19%	100.00%
Education	73	87	72	125	56	806	1219
% within Dept.	5.99%	7.14%	5.91%	10.25%	4.59%	66.12%	100.00%
Engineering Technology	9	14	33	26	18	128	228
% within Dept.	3.95%	6.14%	14.47%	11.40%	7.89%	56.14%	100.00%
English, Foreign Languages, and Cultural Studies	3	9	4	10	1	54	81
% within Dept.	3.70%	11.11%	4.94%	12.35%	1.23%	66.67%	100.00%
Graduate Studies	2	0	2	0	0	10	14
% within Dept.	14.29%	0.00%	14.29%	0.00%	0.00%	71.43%	100.00%
Health and Human Performance	14	24	27	18	16	209	308
% within Dept.	4.55%	7.79%	8.77%	5.84%	5.19%	67.86%	100.00%
Mathematics	0	0	2	2	1	8	13
% within Dept.	0.00%	0.00%	15.38%	15.38%	7.69%	61.54%	100.00%
Nursing	295	499	136	364	203	1224	2721
% within Dept.	10.84%	18.34%	5.00%	13.38%	7.46%	44.98%	100.00%
Psychology	28	52	36	64	37	333	550
% within Dept.	5.09%	9.45%	6.55%	11.64%	6.73%	60.55%	100.00%
Scholars' College	4	15	5	6	0	97	127
% within Dept.	3.15%	11.81%	3.94%	4.72%	0.00%	76.38%	100.00%
Social Work	8	29	28	40	18	213	336
% within Dept.	2.38%	8.63%	8.33%	11.90%	5.36%	63.39%	100.00%
University Studies	85	51	303	274	252	1160	2125
% within Dept.	4.00%	2.40%	14.26%	12.89%	11.86%	54.59%	100.00%
University	741	1079	934	1256	781	6109	10900
% within University	6.80%	9.90%	8.57%	11.52%	7.17%	56.05%	100.00%

For consistency across years of the Fact Book, only 14th day census students enrolled in 16-week and A term courses are reported.

Fall 2019 Enrollment by Home State and Department/School

Department/School	Home State				Total
	Louisiana	Texas	Other States	Other Countries	
Allied Health	325	19	62	1	407
% within Dept.	79.85%	4.67%	15.23%	0.25%	100.00%
Biological and Physical Sciences	527	39	17	3	586
% within Dept.	89.93%	6.66%	2.90%	0.51%	100.00%
Business	1031	80	97	28	1236
% within Dept.	83.41%	6.47%	7.85%	2.27%	100.00%
Creative and Performing Arts	338	36	20	46	440
% within Dept.	76.82%	8.18%	4.55%	10.45%	100.00%
Criminal Justice, History, and Social Sciences	434	27	46	2	509
% within Dept.	85.27%	5.30%	9.04%	0.39%	100.00%
Education	1039	79	79	22	1219
% within Dept.	85.23%	6.48%	6.48%	1.80%	100.00%
Engineering Technology	199	23	3	3	228
% within Dept.	87.28%	10.09%	1.32%	1.32%	100.00%
English, Foreign Languages, and Cultural Studies	66	2	13	0	81
% within Dept.	81.48%	2.47%	16.05%	0.00%	100.00%
Graduate Studies	8	1	5	0	14
% within Dept.	57.14%	7.14%	35.71%	0.00%	100.00%
Health and Human Performance	235	41	23	9	308
% within Dept.	76.30%	13.31%	7.47%	2.92%	100.00%
Mathematics	12	0	1	0	13
% within Dept.	92.31%	0.00%	7.69%	0.00%	100.00%
Nursing	2356	111	244	10	2721
% within Dept.	86.59%	4.08%	8.97%	0.37%	100.00%
Psychology	462	35	47	6	550
% within Dept.	84.00%	6.36%	8.55%	1.09%	100.00%
Scholars' College	120	5	2	0	127
% within Dept.	94.49%	3.94%	1.57%	0.00%	100.00%
Social Work	241	12	80	3	336
% within Dept.	71.73%	3.57%	23.81%	0.89%	100.00%
University Studies	2007	35	74	9	2125
% within Dept.	94.45%	1.65%	3.48%	0.42%	100.00%
University	9400	545	813	142	10900
% within University	86.24%	5.00%	7.46%	1.30%	100.00%

For consistency across years of the Fact Book, only 14th day census students enrolled in 16-week and A term courses are reported.

Creative and Performing Arts	214 - FINE AND GRAPHIC ARTS	18	8
	214A - FINE & GRA. ARTS - GRA. COMM.	11	7
	214B - FINE & GRA. ARTS - STUDIO ART	17	4
	214D - CRAFT	1	0
	214E - FINE & GRA. ARTS - INTERDISCIPLINARY DESIGN	6	8
	225 - COMMUNICATION	15	16
	225A - COMMUNICATION - ORG. COMM.	0	1
	225D - COMM. - MASS COMMUNICATION	0	1
	225E - COMMUNICATION - STRATEGIC	18	5
	225F - COMM.-BRDCST & DIGI MEDIA PROD	21	13
	225G - COMM. - MULTIMEDIA JOURNALISM	4	5
	225H - COMM. - JOURN, BROAD, & DM PRODUCTION	2	4
	225I - COMM. - SPORTS MEDIA	1	2
	242 - MUSIC	11	15
	242E - MUSIC PERF. - MUSIC BUSINESS	11	28
	242M - MUSIC - SACRED MUSIC	1	1
	242P - MUSIC - PERFORMANCE	15	15
	244 - DANCE	13	8
	245 - THEATER	36	21
	245A - THEATRE - DESIGN/TECHNOLOGY	15	5
	245B - THEATRE- PERFORMANCE/DIRECTING	10	7
	245C - THEATRE - MUSICAL THEATRE PERF	7	7
	245D - THEATRE - DANCE PERFORMANCE	3	1
	511 - ART	5	4
	542A - MUSIC - MUSIC EDUCATION	1	4
	542B - MUSIC - PERFORMANCE	4	4
	Total	246	194
Criminal Justice, History, and Social Sciences	250 - CRIMINAL JUSTICE	189	118
	250B - CJ - PRE-LAW & PARALEGAL STUD.	19	5
	256 - UNIFIED PUBLIC SAFETY & ADM.	2	3
	256A - UPSA - LAW ENFORCEMENT ADMIN.	1	9
	256B - UPSA - FIRE & EMS ADMIN.	3	10
	256C - UPSA - EMERGENCY MGT. ADMIN.	3	4
	256D - UPSA - PUBLIC FACILITIES MGT.	7	2
	258A - HUMAN RESOURCE MANAGEMENT	11	4
	258B - INDUSTRIAL TECH-MANUF MGT	1	1
	258C - PUBLIC SAFETY MANAGEMENT	0	1
	258E - ENVIRONMENTAL SCIENCE	1	0
	258F - HEALTH SCIENCE ADMINISTRATION	2	0
	261 - HISTORY	46	30
	579 - HOMELAND SECURITY	16	21
	Total	301	208
Education	010 - LEVEL 1 ED LEADER - ALT. PATH.	8	2
	013 - SP ED M/MOD FOR ELEM ED GR 1-5	10	0
	014 - SP ED M/MOD FOR MIDDLE SCH 4-8	5	1
	015 - SP ED M/MOD FOR SEC ED GR 6-12	2	2
	016 - GIFTED EDUCATION	12	1
	017 - SPEC ED-EARLY INTERV: BIRTH-5	10	0
	019 - ELEMENTARY EDUCATION GR 1 - 5	1	0
	020 - MIDDLE SCHOOL EDUCATION GR 4-8	1	1
	021 - SECONDARY EDUCATION GR 6 - 12	1	1

Education (Cont.)	022 - EDUC. TECHNOLOGY LEADERSHIP	0	1
	023 - SCHOOL LIBRARIAN	12	0
	023U - SCHOOL LIBRARIAN - UNDERGRAD.	8	0
	024 - EDUCATIONAL DIAGNOSTICIAN	17	0
	025 - ENGLISH AS A SECOND LANGUAGE	4	0
	026 - READING SPECIALIST	1	0
	137 - CHILD & FAMILY STUDIES	17	0
	137C - FACS - CONSUMER SERVICES	7	3
	137E - FACS - CHILD DEV. & FAM. REL.	132	3
	137F - CFS - FAMILY LIFE EDUCATION	7	0
	138E - FACS - CHILD DEV. & FAM. REL.	15	0
	3101 - EARLY CHILDHOOD ED (PRE-K - 3)	85	0
	3102 - ELEMENTARY EDUCATION	96	2
	320 - SECONDARY EDUC. & TEACHING	7	5
	320B - SEC. EDUC. - BIOLOGY EDUC.	8	3
	320E - SEC. EDUC. - ENGLISH EDUC.	27	5
	320M - SEC. EDUC. - MATHEMATICS EDUC.	11	9
	320S - SEC. EDUC. - SOC. STUDIES ED.	20	25
	320U - SEC. EDUC. - BUSINESS EDUC.	3	1
	327 - MUSIC EDUC. - INSTRUMENTAL	41	73
	328 - MUSIC EDUC. - VOCAL	11	11
	329 - MUSIC ED. - VOCAL/INSTRUMENTAL	2	1
	502 - EDUCATIONAL TECH. LEADERSHIP	0	1
	502A - ETEC LDRSHP - LDRSHP FOR K-12	16	1
	502B - ETEC LDRSHP - WORKFORCE DEV	5	2
	503 - EDUCATIONAL LEADERSHIP	45	14
	504C - CURR. & INSTR. - ENGLISH EDUC.	3	0
	504E - CURR. & INSTR. - READING	22	1
	504G - CURR & INSTR - P.T.S.F.T.T.L.	4	0
	504H - CURR. & INST. - SCHOOL LIBR.	10	0
	504I - CURR. & INST. - TRAN. TO TEACH	2	0
	504J - C&I - ENGLISH AS A SEC. LANG.	1	0
	506A - MAT - ELEM. EDUC. - PROF. STUD	22	1
	507A - MAT - MID. EDUC. - PROF. STUD.	21	9
	508A - MAT - SEC. EDUC. - PROF. STUD.	17	11
	524A - SPECIAL EDUC. - GIFTED EDUC.	17	2
	524C - SPEC ED - EARLY INTERVENTION	3	0
	524D - SP. ED. - ELEM. M/M SPEC. ED.	13	0
	524E - SP. ED. - M.S. & SEC. M/M SPED	7	2
	531A - ELEM. ED. & SP. ED. - PROF. ST	22	3
	533 - COUNSELING	1	0
	533A - COUN. - CLINICAL MENTAL HEALTH	19	8
	533B - COUN. - SCHOOL COUNSELING	6	0
	541A - M.S. ED. & SP. ED. - PROF. ST.	7	2
	545A - AL&D-ADULT & WORKFORCE DEV	8	2
	545B - AL&D-HOMELAND SEC.	0	3
	545C - AL&D - E-LEARNING	3	1
	545E - AL&D - ENGLISH	1	0
	547 - EARLY CHILDHOOD EDUCATION	12	0
	548A - ECED - PROFESSIONAL STUDIES	22	0
	561A - SEC. ED. & SP. ED. - PROF. ST.	3	1

Education (Cont.)	574 - STUDENT AFFAIRS IN HIGHER EDUC	30	14
	582G - SPECIAL EDUCATION	5	0
	582H - EDUCATIONAL TECHNOLOGY	5	1
	582I - EDUCATIONAL LEADERSHIP	8	1
	925 - ADULT LEARNING & DEVELOPMENT	1	0
	925A - COMMUNITY COLLEGE LEADERSHIP	18	8
	925B - ADULT LEARNING & WORKFORCE DEVELOPMENT	17	4
	Total	977	242
Engineering Technology	044 - PROJECT MANAGEMENT	0	1
	140 - ENGINEERING TECHNOLOGY	1	4
	140A - ELECTRONICS	0	4
	140B - INDUSTRIAL	0	7
	140C - ADVANCED MANUFACTURING	0	12
	141 - ELECTRONIC ENGINEERING TECH	1	13
	141A - ELEC. ENG. TECH. - ELECTRONICS	4	50
	141B - ELEC. ENG. TECH. - BIOMEDICAL	5	15
	141E - ELECT. ENG. TECH. - PRE-ENG.	0	1
	145 - INDUSTRIAL ENGINEERING TECH.	14	96
	Total	25	203
English, Foreign Languages, and Cultural Studies	050 - TESOL	1	0
	221 - ENGLISH	11	7
	221A - ENGLISH - LITERATURE	8	2
	221B - ENGLISH - PROFESSIONAL WRITING	8	2
	221C - ENGL - FOLKLIFE/SOUTHERN CULT	1	0
	221D - ENGLISH - FILM STUDIES	4	5
	221E - ENGLISH - CREATIVE WRITING	2	0
	529A - ENGLISH - WRITING & LINGUISTIC	6	4
	529B - ENGLISH - LITERATURE	4	3
	529C - ENGLISH - FOLK/SOUTHERN CULT.	5	1
	529E - ENGLISH - TESOL	2	0
529G - ENGLISH - GENERALIST	4	1	
Total	56	25	
Graduate Studies	500C - OTHER(+30, TRANSFER, A. OF I.)	10	4
	Total	10	4
Health and Human Performance	377 - HEALTH & EXERCISE SCIENCE	88	91
	377O - H&ES - PRE-OCCUPATIONAL THERAP	14	1
	377P - H&ES - PRE-PHYSICAL THERAPY	20	24
	378 - HEALTH & PHYSICAL EDUCATION	10	19
	577A - HAHP - SPORTS ADMINISTRATION	10	22
	577B - HAHP - HEALTH PROMOTION	6	3
	Total	148	160
Mathematics	642 - MATHEMATICS	3	6
	642B - MATH. - ACTUARIAL MATHEMATICS	2	2
	Total	5	8
Nursing	051 - FAMILY NURSE PRACTITIONER	5	0
	053 - PSYCHIATRIC MENTAL HEALTH NP	6	1
	400 - ASSC. OF SCIENCE IN NURSING	677	74
	400A - NURSING - LPN TO ASN	81	9
	400B - NURSING - MEDIC/PARAMEDIC	9	4
	410 - NURSING	1165	194
	410A - NURSING - RN TO BSN	157	17

Fall 2019 Undergraduate Enrollment by Residential Status, and Department/School

Department/School	Non-Preparatory Undergraduates		
	On-Campus*	Not On-Campus*	Total
Allied Health	49	323	372
% within Dept.	13.17%	86.83%	100.00%
Biological and Physical Science	221	365	586
% within Dept.	37.71%	62.29%	100.00%
Business	173	1063	1236
% within Dept.	14.00%	86.00%	100.00%
Creative and Performing Arts	147	271	418
% within Dept.	35.17%	64.83%	100.00%
Criminal Justice, History, and Social Sciences	81	391	472
% within Dept.	17.16%	82.84%	100.00%
Education	149	489	638
% within Dept.	23.35%	76.65%	100.00%
Engineering Technology	49	179	228
% within Dept.	21.49%	78.51%	100.00%
English, Foreign Languages, and Cultural Studies	19	31	50
% within Dept.	38.00%	62.00%	100.00%
Health and Human Performance	78	189	267
% within Dept.	29.21%	70.79%	100.00%
Mathematics	6	7	13
% within Dept.	46.15%	53.85%	100.00%
Nursing	301	2134	2435
% within Dept.	12.36%	87.64%	100.00%
Psychology	116	414	530
% within Dept.	21.89%	78.11%	100.00%
Scholars' College	67	60	127
% within Dept.	52.76%	47.24%	100.00%
Social Work	29	307	336
% within Dept.	8.63%	91.37%	100.00%
University Studies	40	520	560
% within Dept.	7.14%	92.86%	100.00%
University	1525	6743	8268
% within University	18.44%	81.56%	100.00%

Note: As of 14th Class Day

Fall 2019 SCHs Generated by Department/School

<u>Department/School</u>	<u>SCHs Within Dept. By Majors</u>	<u>SCHs Within Dept. by Non- Majors</u>	<u>Total SCHs Within Dept.</u>	<u>SCHs Outside Dept. by Majors</u>
Allied Health	2,195	314	2,509	2,313
Biological and Physical Science	4,637	13,461	18,098	3,988
Business	10,008	1,275	11,283	6,025
Creative and Performing Arts	4,709	9,038	13,747	2,323
Criminal Justice, History, and Social Sciences	3,618	10,794	14,412	2,929
Education	6,157	2,675	8,832	6,308
Engineering Technology	1,770	84	1,854	309
English, Foreign Languages, and Cultural Studies	612	11,253	11,865	1,675
Graduate Studies	0	0	0	56
Health and Human Performance	1,476	831	2,307	2,960
Mathematics	104	9,129	9,233	100
Military Science	0	208	208	0
Nursing	11,974	83	12,057	17,013
Psychology	4,509	5,019	9,528	3,152
Scholars' College	1,184	29	1,213	945
Social Work	2,511	1,215	3,726	1,793
University Studies	116	1,522	1,638	15,041
Total	55,580	66,930	122,510	66,930

Degrees Awarded by Department, Major and Academic Year

Dept./School	Major	2013-14	2014-15	2015-16	2016-17	2017-18	2018-19	Total	Six Yr. Avg.	Three Yr. Avg.
Criminal Justice, History, and Social Sciences (Cont.)	256D - UPSA - PUBLIC FACILITIES MGT.	1	0	0	0	0	0	1	0.17	0.00
	258A - HUMAN RESOURCE MANAGEMENT	0	0	0	0	3	6	9	1.50	3.00
	258B - INDUSTRIAL TECH-MANUF MGT	0	0	0	0	0	2	2	0.33	0.67
	261 - HISTORY	23	31	12	14	21	18	119	19.83	17.67
	261A - HISTORY - AMERICAN HISTORY	0	0	1	0	0	0	1	0.17	0.00
	579 - HOMELAND SECURITY	10	11	13	3	21	11	69	11.50	11.67
	735 - CRIMINAL JUSTICE	10	6	1	1	1	0	19	3.17	0.67
	Total		109	108	107	87	124	103	638	106.33
Education	010 - LEVEL 1 ED LEADER - ALT PATHWAY	11	5	7	19	6	2	50	8.33	9.00
	013 - SPEC. ED. M/M FOR ELEM. EDUC. (PBC)	3	4	5	10	4	2	28	4.67	5.33
	014 - SP ED M/MOD FOR MIDDLE SCH 4-8	0	0	0	2	1	1	4	0.67	1.33
	015 - SP ED M/MOD FOR SEC ED GR 6-12	4	2	4	6	2	1	19	3.17	3.00
	016 - GIFTED EDUCATION (PBC)	9	1	11	11	2	6	40	6.67	6.33
	017 - SPEC ED-EARLY INTERV: BIRTH-5	3	2	1	0	8	2	16	2.67	3.33
	018 - COUNSELING GR K - 12	0	1	0	0	0	0	1	0.17	0.00
	019 - ELEMENTARY EDUC. GR. 1 - 5 (PBC)	0	13	0	7	7	8	35	5.83	7.33
	020 - MIDDLE SCHOOL EDUC. GR. 4 - 8 (PBC)	3	7	0	5	0	3	18	3.00	2.67
	021 - SECONDARY EDUC. GR. 6 - 12 (PBC)	0	7	2	11	2	7	29	4.83	6.67
	022 - ED. TECHNOLOGY LEADERSHIP (PBC)	0	0	0	0	1	0	1	0.17	0.33
	023 - SCHOOL LIBRARIAN - GR (PBC)	6	5	10	20	5	12	58	9.67	12.33
	023U - SCHOOL LIBRARIAN - UG (PBC)	8	2	13	2	5	6	36	6.00	4.33
	024 - EDUCATIONAL DIAGNOSTICIAN	2	5	0	8	5	3	23	3.83	5.33
	025 - ENGLISH AS A SECOND LANGUAGE	0	1	0	1	1	0	3	0.50	0.67
	026 - READING SPECIALIST	12	3	4	4	0	0	23	3.83	1.33
	029 - ELEM ED & SPEC ED M/M GR 1-5	0	0	0	0	4	0	4	0.67	1.33
	137E - FACS - CHILD DEV. & FAM REL.	0	0	0	0	1	23	24	4.00	8.00
	138C - FACS - CONSUMER SERVICES	6	9	1	2	2	0	20	3.33	1.33
	138E - FACS - CHILD DEV. & FAMILY REL.	34	47	44	39	32	17	213	35.50	29.33
	3101 - EARLY CHILDHOOD ED (PRE-K - 3)	6	10	6	4	7	4	37	6.17	5.00
	3102 - ELEMENTARY EDUCATION	13	12	17	13	10	16	81	13.50	13.00
	3106 - BUSINESS EDUCATION	0	1	0	0	0	0	1	0.17	0.00
	3109 - MATHEMATICS EDUCATION	2	0	1	0	0	0	3	0.50	0.00
	3113 - ENGLISH EDUCATION	2	0	0	0	0	0	2	0.33	0.00
	320B - SEC. EDUC. - BIOLOGY EDUC.	0	0	0	0	2	1	3	0.50	1.00
	320E - SEC. EDUC. & TEACHING - ENGLISH	2	2	3	5	4	4	20	3.33	4.33
	320M - SEC. EDUC. & TEACHING - MATH.	2	1	1	1	1	0	6	1.00	0.67

Degrees Awarded by Department, Major and Academic Year

Dept./School	Major	2013-14	2014-15	2015-16	2016-17	2017-18	2018-19	Total	Six Yr. Avg.	Three Yr. Avg.
Education (Cont.)	320S - SEC. EDUC. - SOC. STUDIES ED.	1	0	2	1	2	4	10	1.67	2.33
	320U - SEC. EDUC. - BUSINESS EDUC.	0	1	1	0	0	0	2	0.33	0.00
	327 - MUSIC EDUCATION - INSTRUMENTAL	10	11	19	10	11	10	71	11.83	10.33
	328 - MUSIC EDUCATION - VOCAL	1	4	2	0	3	9	19	3.17	4.00
	329 - MUSIC ED. - VOCAL/INSTRUMENTAL	0	0	1	0	0	0	1	0.17	0.00
	502 - EDUCATIONAL TECH. LEADERSHIP	11	7	1	2	0	0	21	3.50	0.67
	502A - EDUC. TECH. LDRSHP. - FOR K-12	1	0	10	5	11	6	33	5.50	7.33
	502B - ETEC LDRSHP - WORKFORCE DEV	0	2	3	4	1	1	11	1.83	2.00
	503 - EDUCATIONAL LEADERSHIP	10	11	14	14	18	15	82	13.67	15.67
	504C - CURR. & INSTR. - ENGLISH EDUC.	0	0	0	0	1	0	1	0.17	0.33
	504E - CURR. & INST. - READING	3	5	0	4	4	7	23	3.83	5.00
	504G - CURR. & INSTR. - PTSFTTL	4	1	0	0	1	0	6	1.00	0.33
	504H - CURR. & INSTR. - SCHOOL LIBR	1	0	2	1	3	1	8	1.33	1.67
	504I - CURR. & INST. - TRAN. TO TEACH	5	2	1	1	0	1	10	1.67	0.67
	506A - MAT - ELEM EDUC - PROF STUD	11	6	3	10	6	4	40	6.67	6.67
	507A - MAT - MID EDUC - PROF STUD	6	8	6	4	6	9	39	6.50	6.33
	508A - MAT - SEC EDUC - PROF STUD	16	17	12	11	14	9	79	13.17	11.33
	510 - ADULT EDUCATION	1	1	0	0	0	0	2	0.33	0.00
	510A - ADULT EDUC. - CONTINUING EDUC.	8	6	4	1	0	0	19	3.17	0.33
	510B - ADULT EDUC. - HOMELAND SECURITY	5	2	5	0	0	0	12	2.00	0.00
	510C - ADULT EDUC. - TECHNOLOGY MGT.	2	0	0	0	0	0	2	0.33	0.00
	524A - SPEC EDUC - GIFTED EDUCATION	4	8	9	5	9	7	42	7.00	7.00
	524C - SPEC EDUC - EARLY INTERVENTION	2	1	2	1	0	3	9	1.50	1.33
	524D - SPEC EDUC - ELEM. M/M. SPEC. EDUC.	4	1	5	3	4	5	22	3.67	4.00
	524E - SPEC EDUC - M.S. & SEC. M/M SPEC. ED.	5	0	4	4	4	2	19	3.17	3.33
	531 - ELEM. EDUC. & SPECIAL EDUC.	0	1	0	1	0	0	2	0.33	0.33
	531A - ELEM. ED. & SPEC. ED. - M/M PROF. ST.	4	3	11	5	12	5	40	6.67	7.33
	533 - COUNSELING	0	0	2	0	0	0	2	0.33	0.00
	533A - COUN. - CLINICAL MENTAL HEALTH	1	8	7	5	7	13	41	6.83	8.33
	533B - COUN. - SCHOOL COUNSELING	5	2	2	2	6	6	23	3.83	4.67
	541A - M.S. ED. & SPEC. ED. - M/M PROF. STUD.	2	1	2	3	0	6	14	2.33	3.00
	545A - AL&D-ADULT & WORKFORCE DEV	0	0	0	3	7	2	12	2.00	4.00
	545B - AL&D - HOMELAND SECURITY	0	0	1	0	0	0	1	0.17	0.00
	545C - AL&D - E-LEARNING	0	0	0	0	1	1	2	0.33	0.67
	547 - EARLY CHILDHOOD EDUCATION	3	5	3	6	0	6	23	3.83	4.00
	548A - MAT - ECED - PROF STUD	8	7	15	13	9	10	62	10.33	10.67
	561A - SEC. ED. & SP. ED. - PROF. ST.	2	1	2	1	2	3	11	1.83	2.00

Degrees Awarded by Department, Major and Academic Year

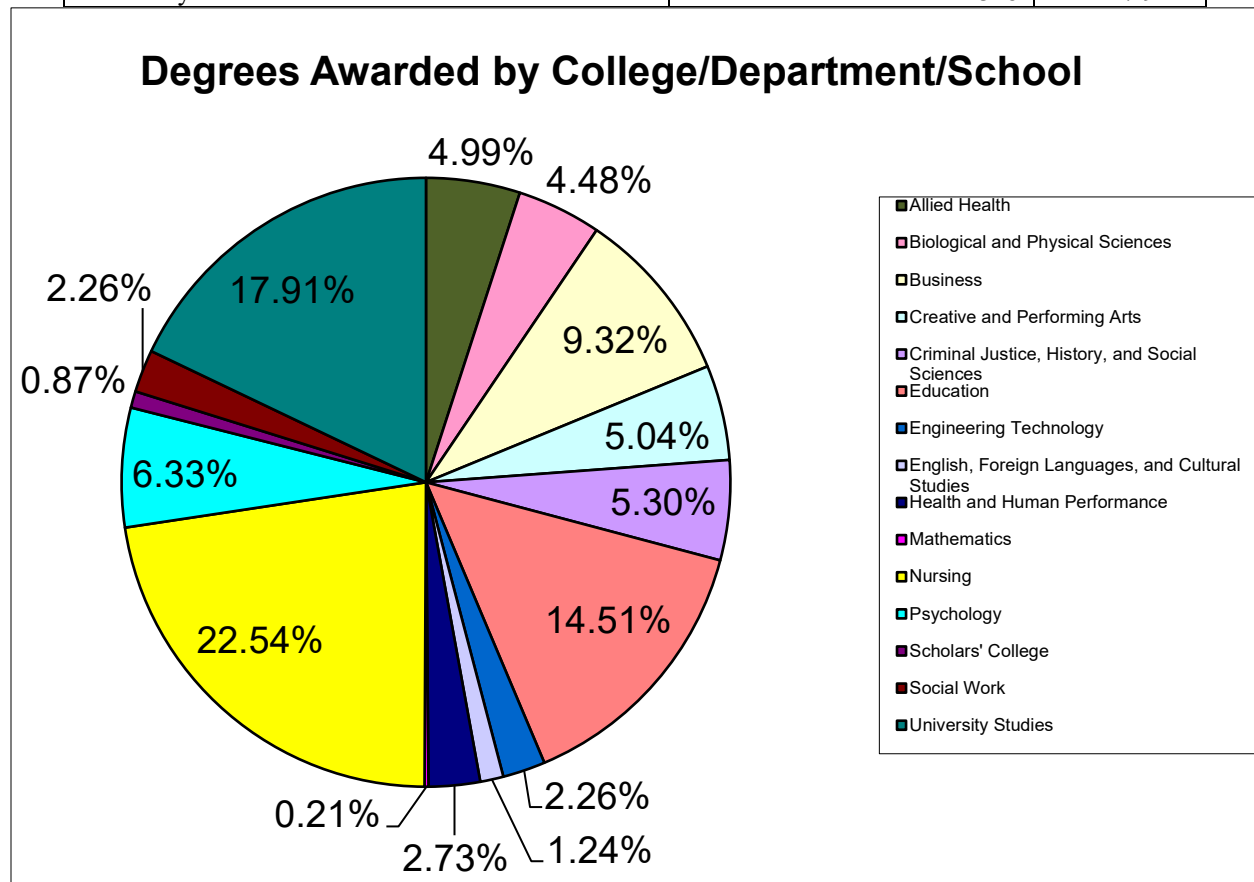
Dept./School	Major	2013-14	2014-15	2015-16	2016-17	2017-18	2018-19	Total	Six Yr. Avg.	Three Yr. Avg.
Education (Cont.)	574 - STUDENT AFFAIRS IN HIGHER EDUC	2	10	6	13	10	13	54	9.00	12.00
	575 - STUDENT PERSONNEL SERVICES	6	0	0	0	0	0	6	1.00	0.00
	582G - SPECIAL EDUCATION (EDS)	3	4	1	1	0	3	12	2.00	1.33
	582H - EDUCATIONAL TECHNOLOGY (EDS)	8	2	0	0	1	1	12	2.00	0.67
	582I - EDUCATIONAL LEADERSHIP (EDS)	2	1	3	3	5	2	16	2.67	3.33
	Total		285	279	291	307	270	282	1714	285.67
Engineering Technology	042 - QUALITY CONTROL	0	0	0	2	4	1	7	1.17	2.33
	044 - PROJECT MANAGEMENT	0	0	0	2	5	1	8	1.33	2.67
	140 - ENGINEERING TECHNOLOGY	0	0	0	0	1	0	1	0.17	0.33
	140A - ELECTRONICS	0	0	0	0	0	1	1	0.17	0.33
	140B - INDUSTRIAL	0	0	0	0	1	2	3	0.50	1.00
	141 - ELECTRONIC ENGINEERING TECH	0	2	0	0	0	0	2	0.33	0.00
	141A - ELEC. ENG. TECH. - ELECTRONICS	9	4	6	8	6	10	43	7.17	8.00
	141B - ELECT. ENG. TECH. - BIOMEDICAL	4	1	4	1	0	0	10	1.67	0.33
	145 - INDUSTRIAL ENGINEERING TECH.	14	15	17	27	29	29	131	21.83	28.33
	732 - ELECTRONICS TECHNOLOGY	1	1	0	0	0	0	2	0.33	0.00
Total		28	23	27	40	46	44	208	34.67	43.33
English, Foreign Languages and Cultural Studies	050 - TESOL	5	4	3	5	6	5	28	4.67	5.33
	052 - WRITING FOR BUS, INDUS, + TECH	0	0	0	0	1	0	1	0.17	0.33
	221 - ENGLISH	1	0	0	0	0	0	1	0.17	0.00
	221A - ENGLISH - LITERATURE	4	3	5	5	4	3	24	4.00	4.00
	221B - ENGLISH - PROFESSIONAL WRITING	6	1	10	2	3	7	29	4.83	4.00
	221D - ENGLISH - FILM STUDIES	1	0	1	0	0	1	3	0.50	0.33
	529A - ENGLISH - WRITING & LINGUISTICS	2	0	3	3	5	4	17	2.83	4.00
	529B - ENGLISH - LITERATURE	1	0	1	7	4	0	13	2.17	3.67
	529C - ENGLISH - FOLK LIFE/SOUTHERN CULT	4	2	0	1	2	0	9	1.50	1.00
	529D - ENGLISH - ONLINE	23	15	16	8	4	0	66	11.00	4.00
	529E - ENGLISH - TESOL	0	0	3	3	2	2	10	1.67	2.33
	529G - ENGLISH - GENERALIST	0	0	0	4	4	2	10	1.67	3.33
	Total		47	25	42	38	35	24	211	35.17
Health and Human Performance	377 - HEALTH & EXERCISE SCIENCE	25	26	17	16	25	17	126	21.00	19.33
	377A - HEALTH & EXER. SCI. - HEALTH SCI.	3	0	3	1	3	0	10	1.67	1.33
	377O - HEALTH & EX. SCI. - PRE-PHYSICAL THERAPY	0	0	1	4	3	3	11	1.83	3.33
	377P - HEALTH & EX. SCI. - PRE-OCCUPATIONAL THERAPY	0	0	5	3	2	3	13	2.17	2.67
	378 - HEALTH & PHYSICAL EDUCATION	3	1	5	2	2	8	21	3.50	4.00
	577A - HAHP - SPORTS ADMINISTRATION	27	9	11	20	17	17	101	16.83	18.00

Top 10 Majors of Graduating Students

2007-08	2008-09	2009-10
410 - Nursing (BSN) (172) 400 - Nursing (ASN) (170) 505 - Master of Education (137) 734 - General Studies (BGS) (116) 733 - General Studies (AGS) (110) 110 - Business Administration (107) 392 - Psychology (107) 618 - Biology (58) 274 - Social Work (56) 250 - Criminal Justice (47)	734 - General Studies (BGS) (172) 410 - Nursing (BSN) (154) 400 - Nursing (ASN) (119) 392 - Psychology (115) 110 - Business Administration (113) 733 - General Studies (AGS) (103) 274 - Social Work (56) 250 - Criminal Justice (49) 505 - Master of Education (48) 618 - Biology (47)	410 - Nursing (BSN) (178) 734 - General Studies (BGS) (151) 392 - Psychology (126) 400 - Nursing (ASN) (116) 110 - Business Administration (110) 733 - General Studies (AGS) (93) 618 - Biology (58) 546 - Nursing (MSN) (55) 250 - Criminal Justice (53) 274 - Social Work (34)
2010-11	2011-12	2012-13
733 - General Studies (AGS) (526) 734 - General Studies (BGS) (165) 410 - Nursing (BSN) (162) 400 - Nursing (ASN) (132) 392 - Psychology (124) 110 - Business Administration (94) 618 - Biology (58) 546 - Nursing (MSN) (57) 250 - Criminal Justice (54) 274 - Social Work (48)	733 - General Studies (AGS) (700) 410 - Nursing (BSN) (197) 734 - General Studies (BGS) (156) 400 - Nursing (ASN) (115) 392 - Psychology (108) 110 - Business Administration (88) 618 - Biology (68) 546 - Nursing (MSN) (54) 250 - Criminal Justice (54) 138 - Family & Consumer Sciences (47)	410 - Nursing (BSN) (231) 733 - General Studies (AGS) (147) 400 - Nursing (ASN) (134) 734 - General Studies (BGS) (130) 110 - Business Administration (92) 392 - Psychology (91) 618 - Biology (64) 250 - Criminal Justice (61) 138 - Family & Consumer Sciences (55) 546 - Nursing (MSN) (54)
2013-2014	2014-2015	2015-2016
733 - General Studies (AGS) (223) 410 - Nursing (BSN) (144) 734 - General Studies (BGS) (143) 392 - Psychology (107) 400 - Nursing (ASN) (85) 110 - Business Administration (69) 250 - Criminal Justice (62) 618 - Biology (59) 546 - Nursing (MSN) (46) 138 - Family & Consumer Sciences (40)	410 - Nursing (BSN) (204) 733 - General Studies (AGS) (140) 734 - General Studies (BGS) (110) 400 - Nursing (ASN) (102) 392 - Psychology (99) 110 - Business Administration (88) 546 - Nursing (MSN) (59) 618 - Biology (65) 250 - Criminal Justice (59) 138 - Family & Consumer Sciences (56)	733 - General Studies (AGS) (313) 410 - Nursing (BSN) (235) 734 - General Studies (BGS) (104) 618 - Biology (95) 392 - Psychology (93) 400 - Nursing (ASN) (88) 110 - Business Administration (78) 250 - Criminal Justice (67) 546 - Nursing (MSN) (59) 138 - Family & Consumer Sciences (45)
2016-2017	2017-2018	2018-2019
410 - Nursing (BSN) (228) 733 - General Studies (AGS) (171) 734 - General Studies (BGS) (118) 110 - Business Administration (115) 392 - Psychology (89) 618 - Biology (80) 400 - Nursing (ASN) (78) 546 - Nursing (MSN) (75) 250 - Criminal Justice (60) 274 - Social Work (43)	733 - General Studies (AGS) (192) 410 - Nursing (BSN) (186) 734 - General Studies (BGS) (118) 110 - Business Administration (115) 400 - Nursing (ASN) (98) 392 - Psychology (93) 250 - Criminal Justice (73) 618 - Biology (68) 546 - Nursing (MSN) (67) 101 - Accounting (45)	733 - General Studies (AGS) (216) 410 - Nursing (BSN) (203) 400 - Nursing (ASN) (140) 734 - General Studies (BGS) (128) 110 - Business Administration (102) 392 - Psychology (100) 618 - Biology (76) 546 - Nursing (MSN) (68) 615 - Radiologic Sciences (67) 250 - Criminal Justice (55)

Degrees Awarded by Department/School (Areas as Of 2018-2019)

Department	# of Degrees Awarded	Percentage
Allied Health	97	4.99%
Biological and Physical Sciences	87	4.48%
Business	181	9.32%
Creative and Performing Arts	98	5.04%
Criminal Justice, History, and Social Sciences	103	5.30%
Education	282	14.51%
Engineering Technology	44	2.26%
English, Foreign Languages, and Cultural Studies	24	1.24%
Health and Human Performance	53	2.73%
Mathematics	4	0.21%
Nursing	438	22.54%
Psychology	123	6.33%
Scholars' College	17	0.87%
Social Work	44	2.26%
University Studies	348	17.91%



2018-2019 Degrees Awarded with a Second Major

Second Major or Second Concentration	Number of Degrees
110 - Business Administration	6
392 - Psychology	10
395 - Addiction Studies	1

Note: Second majors do not include those students who earned two degrees.

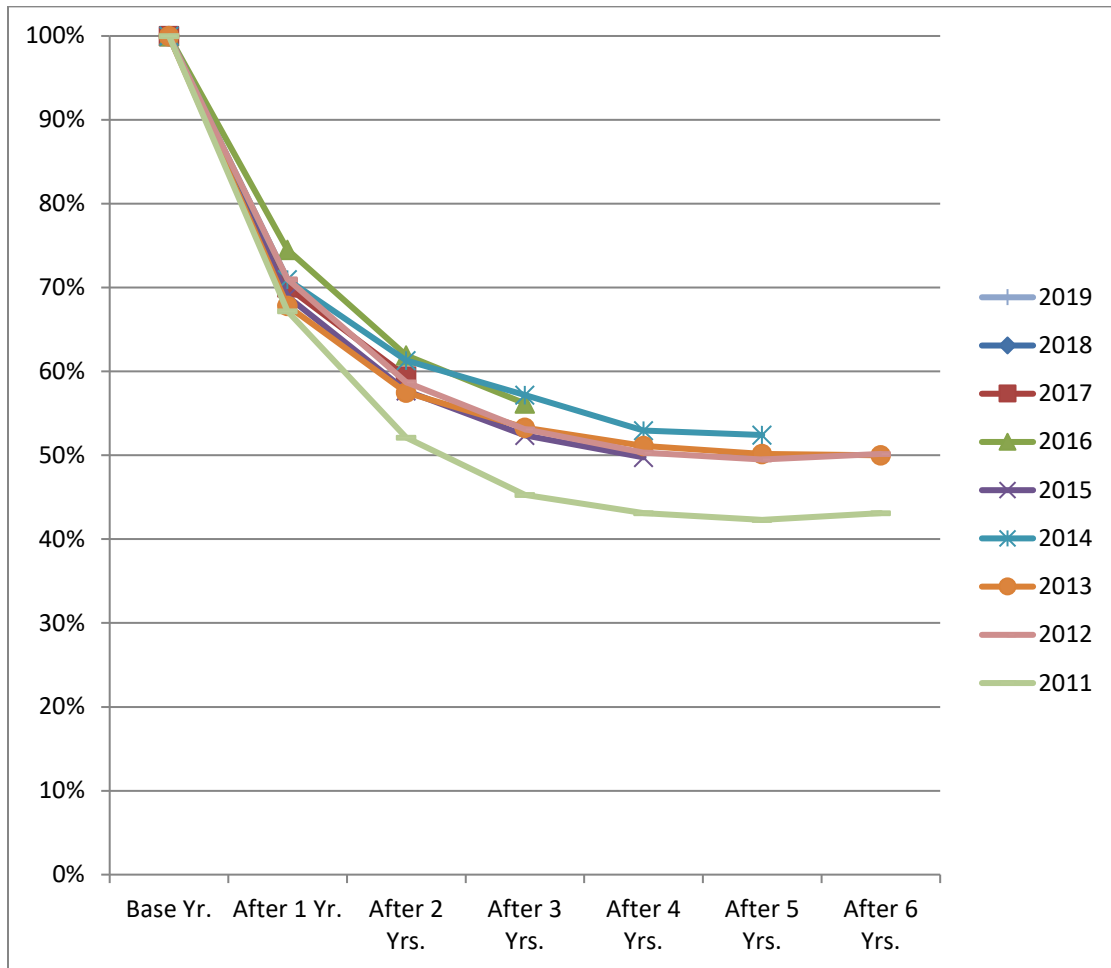
2018-2019 Degrees Awarded with a Minor(s)

Minor (First or Second)	Number of Minors
MI02 - Accounting	5
MI03 - Addiction Studies	3
MI07 - Philosophy, Politics, and Law	1
MI08 - Art	4
MI11 - Biology	4
MI13 - Communication	7
MI14 - Business Administration	21
MI16 - Chemistry	21
MI22 - Computer and Information Systems	8
MI24 - Dance	1
MI25 - Family & Consumer Science	1
MI29 - Child & Family Studies	2
MI31 - Foreign Language	3
MI32 - English	9
MI38 - Geography	1
MI44 - History	14
MI45 - Hospitality Management & Tourism	3
MI48 - Industrial Engineering Technol	1
MI54 - Mathematics	2
MI56 - Microbiology	5
MI57 - Military Leadership	2
MI58 - Military Science	7
MI60 - Music (Performance)	3
MI62 - Music (Theory)	2
MI67 - Pre-Law & Paralegal Studies	7
MI68 - Photography	2
MI75 - Professional French Studies	2
MI78 - Psychology	6
MI80 - Social Sciences	177
MI84 - Spanish	5
MI90 - Theatre	1
MI91 - Wildlife Management	2
MI94 - Criminal Justice	12
MI95 - Liberal Arts	4
MI97 - Classics	2
MI98 - Physical Education & Sports & Leisure Mgt.	8
MI99 - Culinary Arts	5

Note: A student may have more than one minor. Thus, a student could be included in the above numbers multiple times.

University Persistence Rates for Full-Time, First-Time Degree-Seeking Entering Freshmen

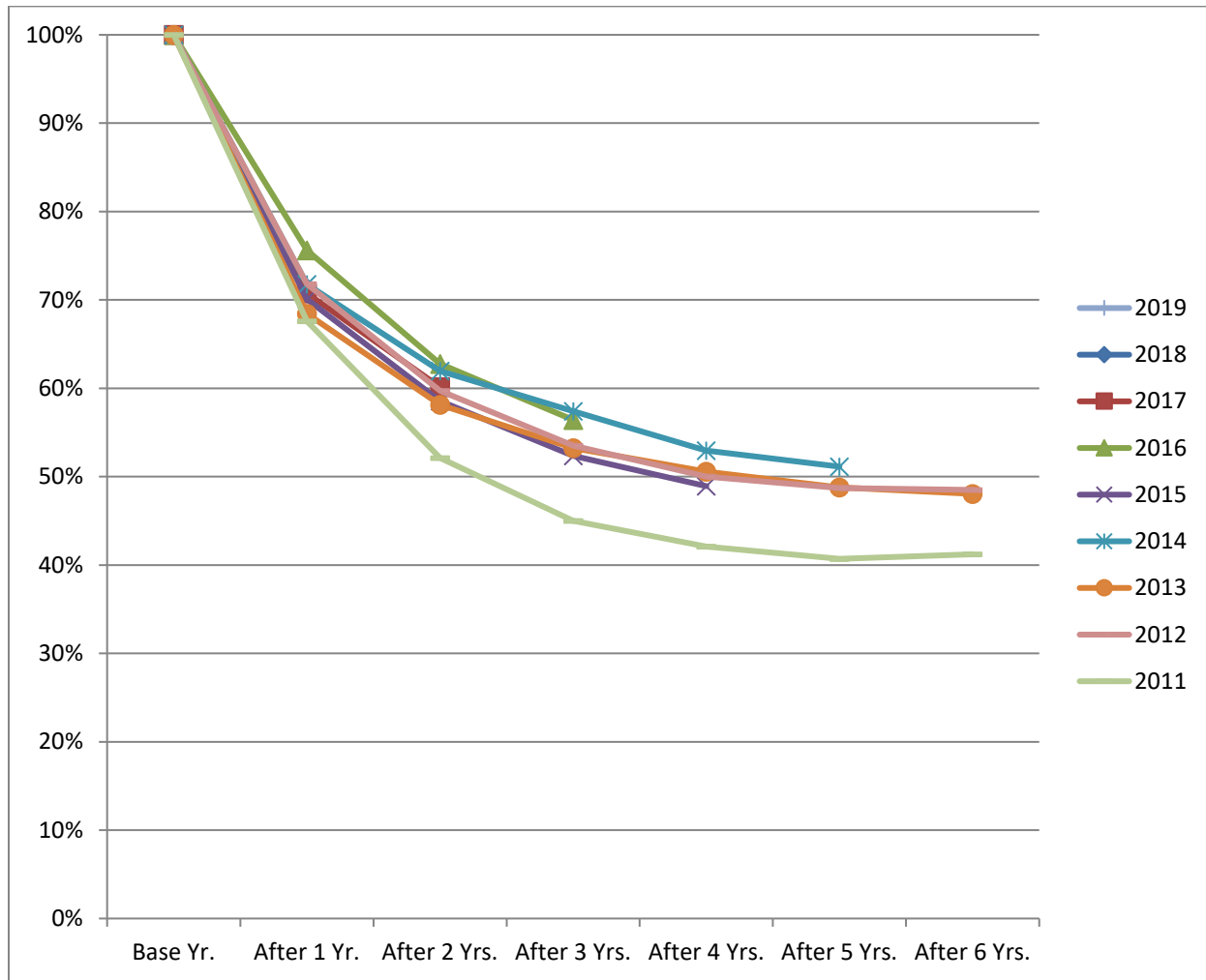
Persisted Percentage							
Year	Base Yr.	After 1 Yr.	After 2 Yrs.	After 3 Yrs.	After 4 Yrs.	After 5 Yrs.	After 6 Yrs.
2019	100%						
2018	100%	70.0%					
2017	100%	70.1%	59.4%				
2016	100%	74.5%	61.9%	56.2%			
2015	100%	69.0%	57.7%	52.4%	49.8%		
2014	100%	71.0%	61.3%	57.2%	52.9%	52.4%	
2013	100%	67.8%	57.5%	53.3%	51.1%	50.2%	50.0%
2012	100%	71.0%	58.7%	53.1%	50.3%	49.5%	50.2%
2011	100%	67.2%	52.1%	45.3%	43.1%	42.3%	43.1%



Note: Persistence is the combination of retained and graduated students.

University Persistence Rates for First-Time, Full-Time Baccalaureate-Seeking Entering Freshmen

Persisted Percentage							
Year	Base Yr.	After 1 Yr.	After 2 Yrs.	After 3 Yrs.	After 4 Yrs.	After 5 Yrs.	After 6 Yrs.
2019	100%						
2018	100%	71.3%					
2017	100%	70.7%	60.1%				
2016	100%	75.6%	62.8%	56.4%			
2015	100%	70.1%	58.6%	52.4%	48.9%		
2014	100%	71.8%	61.9%	57.4%	53.0%	51.1%	
2013	100%	68.4%	58.1%	53.2%	50.6%	48.8%	48.1%
2012	100%	71.8%	59.7%	53.5%	50.0%	48.7%	48.5%
2011	100%	67.6%	52.1%	45.0%	42.1%	40.7%	41.2%



Note: Persistence is the combination of retained and graduated students.

Fall 2013 Full-Time Degree-Seeking Entering Freshmen
6-Year Graduation Rates by College/Department/School

<u>College/Department/School*</u>	<u>Revised Cohort</u>	<u>Grad. at NSU</u>	<u>Grad. Rate</u>	<u>Grad. in Dept.</u>	<u>Grad. Rate</u>	<u>Grad. in College</u>	<u>Grad. Rate</u>
College of Arts and Sciences	541	248	45.84%	158	29.21%	200	36.97%
<i>Biological and Physical Sciences</i>	158	87	55.06%	46	29.11%	62	39.24%
<i>Creative and Performing Arts</i>	83	41	49.40%	33	39.76%	38	45.78%
<i>Criminal Justice, History, and Soc. Sci.</i>	79	27	34.18%	26	32.91%	27	34.18%
<i>English, Foreign Languages, and Cultural Studies</i>	11	5	45.45%	5	45.45%	5	45.45%
<i>Mathematics</i>	47	19	40.43%	15	31.91%	16	34.04%
<i>Scholars</i>	5	2	40.00%	1	20.00%	2	40.00%
<i>University Studies</i>	64	40	62.50%	21	32.81%	30	46.88%
College of Business & Technology	94	27	28.72%	11	11.70%	20	21.28%
<i>Business</i>	146	60	41.10%	49	33.56%	49	33.56%
<i>Engineering Technology</i>	146	60	41.10%	49	33.56%	49	33.56%
College of Education and Human Development	262	134	51.15%	77	29.39%	87	33.21%
<i>Education</i>	121	65	53.72%	32	26.45%	37	30.58%
<i>Health and Human Performance</i>	56	29	51.79%	14	25.00%	15	26.79%
<i>Psychology</i>	55	22	40.00%	14	25.45%	17	30.91%
<i>Social Work</i>	30	18	60.00%	17	56.67%	18	60.00%
College of Nursing and Allied Health	282	131	46.45%	71	25.18%	77	27.30%
<i>Nursing</i>	35	24	68.57%	11	31.43%	11	31.43%
<i>Allied Health</i>	247	107	43.32%	60	24.29%	66	26.72%
Total	1231	573	46.55%	355	28.84%	413	33.55%

*The college/department/school is as of Fall 2019.

NOTE: These numbers are a six-year graduation rate and include associate degrees awarded in the fourth to sixth years. The federal government and the state use a 150% of time graduation rate that would exclude those associate degrees.

Fall 2019 Full-Time Faculty by College
Gender and Ethnicity

Primary Department/School	Gender	Ethnicity or Racial Description									
		Asian	American Indian or Alaskan Native	Black	Hispanic	Native Hawaiian or Other Pacific Islander	White	Foreign	Race/Ethnicity Unknown	Two or More Races	Total
Arts and Sciences	Female	0	1	1	4	1	59	0	0	2	68
	Male	5	0	0	5	0	77	1	0	3	91
	Total	5	1	1	9	1	136	1	0	5	159
Business and Technology	Female	0	0	2	1	0	16	0	1	1	21
	Male	3	0	0	1	0	13	0	0	0	17
	Total	3	0	2	2	0	29	0	1	1	38
Education and Human Development	Female	1	0	6	0	0	31	0	0	1	39
	Male	2	0	2	2	0	11	0	0	0	17
	Total	3	0	8	2	0	42	0	0	1	56
Nursing and Allied Health	Female	0	0	11	1	0	54	0	0	0	66
	Male	0	0	0	0	0	5	0	0	1	6
	Total	0	0	11	1	0	59	0	0	1	72
University Totals	Female	1	1	20	6	1	160	0	1	4	194
	Male	10	0	2	8	0	106	1	0	4	131
	Total	11	1	22	14	1	266	1	1	8	325

Fall 2019 Full-Time Faculty by Rank and Tenure Status

Primary College	Tenure Status	RANK				Total
		Professor	Associate Professor	Assistant Professor	Instructor	
Arts and Sciences	Tenured	42	35	8	0	85
	Tenure Track	1	6	41	0	48
	Non Tenure Track	1	0	2	23	26
	Total	44	41	51	23	159
Business and Technology	Tenured	5	2	1	0	8
	Tenure Track	0	4	15	0	19
	Non Tenure Track	0	0	1	10	11
	Total	5	6	17	10	38
Education and Human Development	Tenured	9	14	1	0	24
	Tenure Track	0	0	13	0	13
	Non Tenure Track	0	0	4	15	19
	Total	9	14	18	15	56
Nursing and School of Allied Health	Tenured	4	11	16	0	31
	Tenure Track	0	2	30	0	32
	Non Tenure Track	0	0	8	1	9
	Total	4	13	54	1	72
University Total	Tenured	60	62	26	0	148
	Tenure Track	1	12	99	0	112
	Non Tenure Track	1	0	15	49	65
	Total	62	74	140	49	325

Student Financial Aid Information

Type of Assistance	Number of Students Assisted			Total Amount of Financial Assistance		
	2017	2018	2019	2017	2018	2019
FEDERAL FUNDS						
PELL Grants	4,061	4,710	4,775	16,067,751	20,405,175	22,186,774
Other Grants	1,131	1,136	1,101	3,290,216	3,215,267	3,013,559
Stafford Subsidized Loans	4,071	4,536	4,964	15,767,420	17,260,817	17,799,922
Stafford Unsubsidized Loans	5,031	5,798	6,119	28,550,283	31,196,303	30,323,249
Perkins Loans	16	16	0	68,750	71,500	0
Other Loans	649	735	735	5,216,417	5,948,163	6,394,692
Work Study	359	273	275	304,406	329,977	330,140
Total				69,265,243	78,427,202	80,048,336
STATE FUNDS						
TOPS Scholarships	2,253	2,480	2,586	11,339,692	12,426,550	12,950,792
Grants	2,456	2,689	3,111	1,972,810	2,162,276	2,514,128
Total				13,312,502	14,588,826	15,464,920
INSTITUTIONAL FUNDS						
Athletic Scholarships	484	486	527	4,714,903	4,827,796	5,052,346
Academic Scholarships	1,295	1,545	1,745	4,645,942	5,677,242	6,669,972
Talent/Activity Scholarships	554	556	593	1,540,307	1,651,313	1,720,179
Foundation/Alumni Scholarships	896	993	1,054	1,651,421	2,100,088	2,117,849
Grants	465	360	344	524,521	614,226	615,547
Work Study	132	193	180	265,712	371,097	365,500
Total				13,342,806	15,241,762	16,541,393
TUITION WAIVERS/EXEMPTIONS						
In-State	2,342	**	**	6,746,168	**	**
Out-of-State	320	**	**	2,107,950	**	**
Total	2,662	2735	3,056	8,854,118	7,956,958	9,305,615
OTHER FINANCIAL AID	642	820	781	1,149,536	1,459,071	1,482,345
GRAND TOTAL				105,924,205	117,673,819	122,842,609
UNDUPLICATED # OF STUDENTS	10,148	11,114	11,614			

Note: Financial Aid years are different from Academic Years. The 2019 financial aid year consists of FA '18 to SU '19.

** Tuition Waivers / Exemptions are no longer classified as In-State and Out-of-State in the same manner as prior years. Only Texas border students (specified counties) and graduate students awards are now included in out-of-state figures. The Fact Book will no longer report these individual categories.

Entering Freshmen TOPS Recipients (Financial Aid Year 2019)

Number Receiving TOPS Awards	Total Amount of TOPS Assistance Received
908	\$4,381,840

OFFICE OF SPONSORED PROGRAMS

MISSION:

The mission of Northwestern State University's Office of Sponsored Programs (OSP) is to nurture and develop the sponsored-programs enterprise at NSU, in accordance with the University's overall mission.

SERVICES:

OSP provides information and services to NSU faculty members in several areas:

- Funding Opportunities (Federal, State, Local, and Private)
- Sponsored Programs Guidelines
- Proposal Preparation
- Budget Preparation
- University Review
- Proposal Transmittal
- Grants Management
- Contract Review and Negotiation with Sponsors
- Grant Budget Modifications
- Project Reporting
- Project Termination
- Human Subjects Research Approval
- Other Compliance Matters
- Workshops
- InfoEd

NSU's Office of Sponsored Programs is dedicated to providing state-of-the-art information, advice, and assistance to faculty and staff relative to all sponsored-programs matters/issues and continuously seeks ways to improve the processes and services it provides. The University encourages its faculty to undertake sponsored, scholarly activities as a means of (a) offering modern instructional programs to students and (b) enhancing the academic stature of the faculty and the University.

Department of Military Science US Army Reserve Officers' Training Corps (ROTC)

During the 1950 fall semester, then Northwestern State College (NSC) President H. Lee Prather, with the support of the Department of the Army, established the NSC Senior Reserve Officers' Training Corps. Branch material, anti-aircraft artillery was offered initially. By the end of the academic year, 220 students elected to participate in military training. The program produced its first commissioned officers later that year. The transition to the General Military Science program was completed in June 1955.

On 31 March 1965, a new "Agreement for the Establishment of Army Reserve Officers' Training Corps Unit" was signed by the Department of the Army and NSC President John S. Kyser. Under the terms of this Agreement, NSC contracted to continue its voluntary four-year ROTC program while concurrently offering a two-year course of instruction in military science. Additionally, the college would provide an armory, secretary, and utilities. The armory was later named for Louisiana Governor James A. Noe in thanks for his continued support.

NSU's Department of Military Science and the Joint Readiness Training Center at Fort Polk, Louisiana, mutually support US Army Cadet Command by identifying quality Soldiers with officer potential and assisting them in transitioning from the enlisted ranks to officers under the Army's ROTC Green to Gold Program.

The Northwestern Demon Regiment (NDR) was organized on 2 May 2009 to foster a spirit of loyalty, friendship, commitment, and communication among alumni, Cadets, parents, faculty and staff, and other friends of Northwestern and the Department of Military Science. The Regiment has established an Endowed Professorship to help meet the program's financial needs, and it continues to raise funds throughout the year to assist with the annual Military Ball, Staff Ride, tailgating, and other Cadet activities.

Northwestern's ROTC Demon Battalion has commissioned over 1,000 students as Second Lieutenants in the United States armed services, whether on active duty, Army Reserve, or the Louisiana Army National Guard. Many graduates have become distinguished Army officers, including eight general officers. Notably, five NSU ROTC commissioned officers have been inducted into NSU's highest Hall of Distinction, the Long Purple Line.

Military Science Enrollment by Fall Semester

Gender	2011	2012	2013	2014	2015	2016	2017	2018	2019
Female Cadets	15	17	13	14	20	15	17	17	22
Male Cadets	27	25	37	35	34	32	25	33	29
Total	42	42	50	49	54	47	42	50	51

Department of Military Science (Continued)
US Army Reserve Officers' Training Corps (ROTC)

Fall 2019 Military Science Enrollment by Gender Ethnicity and Classification

<u>Gender</u>	<u>Classification</u>	<u>Black</u>	<u>Hispanic</u>	<u>White</u>	<u>Native Hawaiian or Pacific Islander</u>	<u>Unknown</u>	<u>Two or More Races</u>	<u>Total</u>
Female	EFR							
	FR	3		5			1	9
	SO	4		1				5
	JR	5	1					6
	SR				1			1
	GR		1					1
Total Female		12	2	6	1		1	22
Male	EFR							
	FR	2		6			1	9
	SO	4		5				9
	JR	2	1	5			1	9
	SR	1					1	2
	GR							0
Total Male		9	1	16			3	29
Total Cadets		21	3	22	1		4	51

Department of Military Science (Continued)
US Army Reserve Officers' Training Corps (ROTC)

Fall 2019 Military Science Enrollment by Major

College	Major	Headcount	College Total
Arts and Sciences	220 - LIBERAL ARTS	1	
	225D - COMM. - MASS COMMUNICATION		
	225F - COMM.-BRDCST & DIGI MEDIA PROD		
	250 - CRIMINAL JUSTICE	10	
	250A - CRIMINAL JUSTICE - PRE-LAW		
	250B - CJ- PRE-LAW & PARALEGAL STUDIES		
	256B - UPSA - FIRE & EMS ADMIN.		
	261 - HISTORY	4	
	618 - BIOLOGY	2	
	618M - BIOLOGY - BIOMEDICAL	1	
	618P - BIOL - PRE-PHYSICIAN ASSISTANT	1	
	734 - GENERAL STUDIES	5	
	820A - LIBERAL ARTS - SCIENTIFIC INQ.		
	Total	24	24
	Education and Human Development	3101 - EARLY CHILDHOOD ED (PRE-K-3)	
3102 - ELEMENTARY EDUCATION			
320S - SEC. ED. - SOCIAL STUDIES EDUC			
3770 - HEALTH & EX. SCI. - PRE - OCCUPATIONAL THERAPY			
377P - HEALTH & EX. SCI. - PRE-PHYSICAL THERAPY		5	
392 - PSYCHOLOGY		7	
Total	12	12	
Nursing	410 - NURSING	4	
	Total	4	4
Business and Technology	102 - COMPUTER INFORMATION SYSTEMS	5	
	110 - BUSINESS ADMINISTRATION	1	
	110J - BUSINESS ADM. - MANAGEMENT		
	141 - ELECTRONIC ENGINEERING TECH	2	
	145 - INDUSTRIAL ENGINEERING TECH.	2	
Total	10	10	
Total		50	50