

Student Technology Fee  
Special Initiative Request Form  
Fiscal Year 2008-09  
Northwestern State University of Louisiana

**ALL BLANKS MUST BE FILLED COMPLETELY**

Prepared by: **Shreveport SGA**

For: **Student Body of NSU**

Department/Unit: \_\_\_\_\_ College: **Nursing** Campus: **Shreveport**

Which NSTEP Goals/Objectives does this project meet? **(1) to improve access to technology by students, faculty, and staff at NSU; (2) to provide classrooms with updated technology and multimedia; (7) to encourage technology initiatives by faculty, staff, and students**

Requested equipment will be located/installed/housed? Building \_\_\_\_\_ Room \_\_\_\_\_

Are department property policies and procedures in place for requested equipment? \_\_\_\_\_

Which individual will be responsible for property control of the requested equipment?

Signature: **R. Joe Campbell, SSGA President**

Date: **August 22, 2008**

Proposal Requested Amount: **See Attached**

Budget Attached (circle one): **YES**

Proposal delivered to Student Technology located in Watson Library, Room 113. Date \_\_\_\_\_

**The proposal must include all specifications, description, model number, quotation, cost, state contract number, and vendor for each item. If the proposal does not include all requested information, it will be returned to requestor.**

1. Describe target audience.

**Student body of NSU**

2. Describe project/initiative for which you are requesting funds.

**See Attached**

3. State measurable objectives that will be used to determine the impact/effectiveness of the project.

**Usage of the technology per semester for the teaching of the student body in classroom to enhance student learning.**

4. Indicate how each project objective will be evaluated.

**Usage of the technology per semester for the teaching of the student body in classroom to enhance student learning.**

5. If funded, which NSTEP <http://www.nsula.edu/nstep/NSTEP.pdf> objective(s) will this funding of this project advance. How will funding of the project advance the University and College/unit technology plan?

**(1) to improve access to technology by students, faculty, and staff at NSU; (2) to provide classrooms with updated technology and multimedia; (7) to encourage technology initiatives by faculty, staff, and students**

6. Provide a justification for funding of this project. Estimate the number of student that will be served per academic year and in what ways. Please indicate also any unique needs of the target group.

7. List those individuals who will be responsible for the implementation of the project/initiative and indicate their demonstrated abilities to accomplish the objectives of the project.

8. Describe any personnel (technical or otherwise) required to support the project/initiative.

9. Provide a schedule for implementation and evaluation.

**ASAP**

10. Estimate the expected life of hardware and software. Explain any anticipated equipment/software upgrades during the next five years.

11. Explain in detail a plan and policy that will be in place to ensure property security/controls for any equipment received through a Student Technology Fee.

If you are requesting equipment that will be either/or checkout to students or moved within the department, you must provide a checkout/loan policy.

12. Attach a detailed budget.

**See Attached**

**Attachment:**

**STAT  
Special Initiatives**

**Shreveport SGA  
Items for Inclusion in 2008-2009 Tech Fee Budget  
August 22, 2008**

**A. Student Response System Media Carts (Natchitoches Campus)**

To facilitate faster implementation of Student Response System in classrooms not yet scheduled for Smart Classroom upgrades

Per cart: projector/\$850.00; cart/\$200.00; PC/\$1342.00; license/\$53.00;  
total/around \$2445 per cart

Qty: 12 carts

\$29,340.00

**B. Flexible Skeleton (Shreveport Campus – Radiologic Science)**

Cost: \$552.27, plus estimated \$31.00 S/H

[http://www.universalmedicalinc.com/fred-the-flexible-skeleton-model/detail/A15-2\\_9044](http://www.universalmedicalinc.com/fred-the-flexible-skeleton-model/detail/A15-2_9044)

Qty: 1

\$ 583.27

**C. Anthropomorphic Pelvis Phantom (Shreveport Campus – Radiologic Science)**

Cost: \$5315.00, plus S/H

Qty: 1

\$ 5,315.00\*

\*plus shipping & handling

**TOTAL**

**\$35,238.27\***

\*plus shipping & handling

CV equipment + 6,323.85  

---

\$ 41,562.12

# OPRAX MEDICAL

INTERNATIONAL

Accessories

Equipment

Supplies

Parts

## Sectional Phantoms.



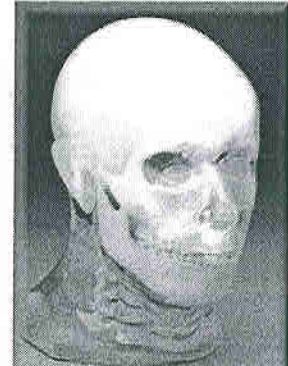
RS109, RS-110

### Anthropomorphic Body Sections With Applications Throughout The Field Of Radiography

Sectional phantoms, with the anatomic and radio-fidelity of PIXY, are used widely in teaching/training, with many other applications. They represent an average male 5 ft. 9 in. tall (175cm), with a weight of 162 lbs. (74kg). They are rugged, easily transported and shatter-proof.



Sectional phantoms do not replace simple geometric phantoms that are used to evaluate individual characteristics of an imaging system. They provide comprehensive evaluation of the imaging system and imaging techniques under realistic conditions. Typical applications are the same as PIXY.



RS-108T



RS-114T



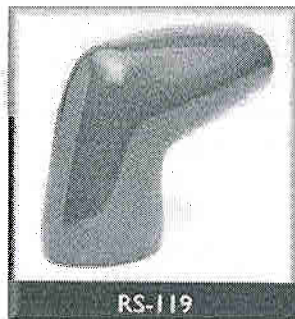
RS-115



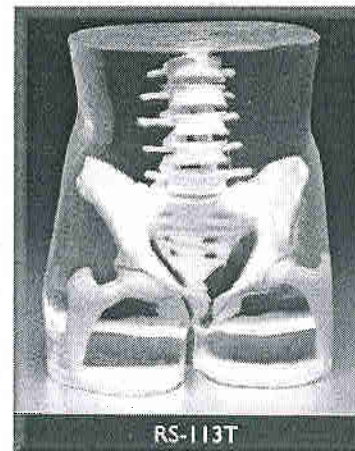
RS-111



RS-118T

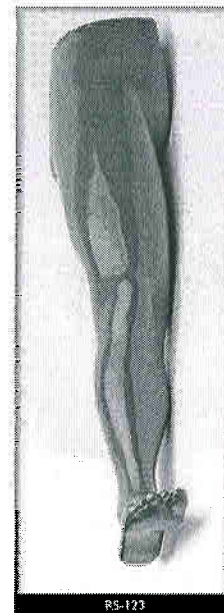
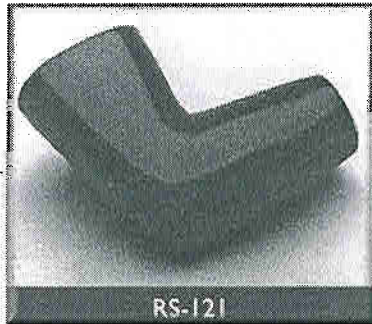
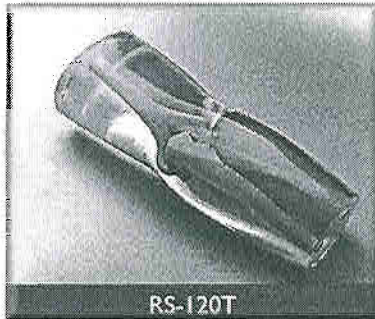


RS-119



RS-113T





Stock #	Description	Your Price
RS-108	Opaque Head, with complete cervical spine (C1-C7)	\$4,514.00
RS-108T	Transparent Head, with complete cervical spine (C1-C7)	\$4,867.00
RS-109	Opaque Head, without cervical spine	\$3,543.00
RS-109T	Transparent Head, without cervical spine	\$3,896.00
RS-110	Opaque Head, with 5 step wedge & resolution test pattern (2-10 1p/mm), without cervical spine	\$4,197.00
RS-110T	Transparent Head, with 5 step wedge & resolution test pattern (2-10 1p/mm), without cervical spine	\$4,550.00
RS-111	Opaque Thorax	\$6,825.00
RS-111T	Transparent Thorax	\$7,507.00
RS-113	Opaque Pelvis	\$5,315.00
RS-113T	Transparent Pelvis	\$5,849.00
RS-114	Opaque Hand / Wrist	\$1,298.00
RS-114T	Transparent Hand / Wrist	\$1,469.00
RS-115	Opaque Hand / Wrist (Oblique position)	\$1,298.00
RS-115T	Transparent Hand / Wrist (Oblique position)	\$1,469.00
RS-116	Opaque Foot / Ankle	\$1,322.00

RS-116T	Transparent Foot / Ankle	\$1,551.00
RS-117	Opaque Foot / Ankle (Plantar Flexion)	\$1,322.00
RS-117T	Transparent Foot / Ankle (Plantar Flexion)	\$1,551.00
RS-118	Opaque Knee	\$1,207.00
RS-118T	Transparent Knee	\$1,429.00
RS-119	Opaque Knee (90 deg. Flexion), left only	\$1,207.00
RS-119T	Transparent Knee (90 deg. Flexion), left only	\$1,429.00
RS-120	Opaque Elbow (natural position), right or left	\$1,041.00
RS-120T	Transparent Elbow (natural position), right or left	\$1,214.00
RS-121	Opaque Elbow (90 deg. Flexion)	\$1,041.00
RS-121T	Transparent Elbow (90 deg. Flexion)	\$1,214.00
RS-122	Opaque Complete Arm / Shoulder	\$3,204.00
RS-122T	Transparent Complete Arm / Shoulder	\$3,573.00
RS-123	Opaque Leg / Hip	\$4,050.00
RS-123T	Transparent Leg / Hip	\$4,500.00
International	<b>CALL for pricing on all phantoms shipping overseas</b>	\$Call

Northwest Office: Gresham, Oregon  
Southwest Office: Southern California

Call Toll Free: 866-827-9729  
E-Mail: [Sales@opraxmedical.com](mailto:Sales@opraxmedical.com)



Close

Dell recommends Windows Vista® Business.

## View/Print Cart

Print Page

Northwestern State University  
 E-quote Number: 1008122283411

*Shreve 3*

<b>Saved By:</b> Chris P Brumley brumleyc@nsula.edu	<b>Phone Number:</b> (318) 357-6697
<b>Saved On:</b> Tuesday, August 26, 2008	<b>Purchasing Agent:</b>
<b>Expires On:</b> Saturday, October 25, 2008	<b>Notes/Comments:</b>
<b>Additional Comments:</b>	

### Description



#### OptiPlex 755 Desktop

Date & Time: August 26, 2008 1:29 PM CST

#### SYSTEM COMPONENTS

**OptiPlex 755 Desktop** Qty 1  
 Intel® Core™ 2 Duo Processor E8200 (2.66GHz, 6M, VT, 1333MHz FSB), Genuine Windows Vista® Business Downgrade, XP Pro Installed, English Unit Price \$1,415.25

**Catalog Number:** 25 E1135

<b>Module</b>	<b>Description</b>	<a href="#">Show Details</a>
---------------	--------------------	------------------------------

<b>OptiPlex 755 Desktop</b>	Intel® Core™ 2 Duo Processor E8200 (2.66GHz, 6M, VT, 1333MHz FSB)
-----------------------------	---

<b>Operating System(s)</b>	Genuine Windows Vista® Business Downgrade, XP Pro Installed, English
----------------------------	--

<b>File System</b>	NTFS File System for all Operating Systems
--------------------	--

<b>Memory</b>	3GB DDR2 Non-ECC SDRAM, 667MHz, (4 DIMM)
---------------	--

<b>Keyboard</b>	Dell USB Keyboard, No Hot Keys
-----------------	--------------------------------

<b>Monitors</b>	Dell 17 inch UltraSharp™ 1708FP Flat Panel, Adjustable Stand, VGA/DVI
-----------------	---

<b>Video Card</b>	256MB ATI Radeon 2400 XT, Dual Monitor DVI or VGA (TV-out), low profile
-------------------	---

<b>Boot Hard Drives</b>	80GB SATA 3.0Gb/s and 8MB DataBurst Cache™
-------------------------	--

<b>Floppy Drive and Media Reader</b>	No Floppy Drive
--------------------------------------	-----------------

<b>Mouse</b>	Dell USB 5-Button Premium Mouse
--------------	---------------------------------

<b>Basic Systems Management Mode</b>	Intel® vPro™ Secure Advanced Hardware Enabled Systems Management
--------------------------------------	--

<b>Removable Media Storage Devices</b>	16X DVD+/-RW SATA, Roxio Creator™ CyberlinkPowerDVD™
--	--

<b>Speakers</b>	No Speaker, OptiPlex
-----------------	----------------------

<b>Resource CD and DVD</b>	No Resource CD
----------------------------	----------------

<b>Dell Energy Smart</b>	Dell Energy Smart Enable
--------------------------	--------------------------

<b>Hardware Support</b>	3 Year ProSupport for IT and 3 Year NBD Onsite
-------------------------	--

<b>Services</b>	Service
<b>Installation Support Services</b>	No Onsite System Setup
<b>Ship Packaging Options</b>	Shipping Material for Single Hard Drive System, Desktop
<b>Second Monitors</b>	Dell 17 inch UltraSharp™ 1708FP Flat Panel, Adjustable Stand, VGA/DVI
<b>Processor Branding</b>	vPro Sticker
<b>Labels</b>	Vista Premium Downgrade Relationship Desktop
<b>TOTAL:\$1,415.25</b>	

---

	<b>Total Price</b>
<b>Sub-total</b>	<b>\$1,415.25</b>
<b>Shipping &amp; Handling</b>	<b>\$0.00</b>
<b>Total Price<sup>1</sup></b>	<b>--</b>

© 2008 Dell For customers of the 50 United States and the District of Columbia only.  
[Site Terms](#) | [Terms of Sale](#) | [Privacy](#) | [Feedback](#)

[▲ Top](#)

[Large Text](#)  
sn ECM6





Close

Dell recommends Windows Vista® Business.

## View/Print Cart


[Print Page](#)


Northwestern State University  
E-quote Number: 1005576220832

Shreve 3

<b>Saved By:</b> Chris P Brumley brumleyc@nsula.edu	<b>Phone Number:</b> (318) 357-6697
<b>Saved On:</b> Tuesday, August 26, 2008	<b>Purchasing Agent:</b>
<b>Expires On:</b> Saturday, October 25, 2008	<b>Notes/Comments:</b>
<b>Additional Comments:</b>	

### Description

	<b>Chief RLT-1 - Mounting kit ( wall plate, tilt bracket, bracket ) for flat panel - black - screen size: up to 60" - wall-mountable</b>	Qty	3
	Manufacturer Part# RLT1 Dell Part# A1229399	Unit Price	\$107.10
			<b>TOTAL:\$321.30</b>

	<b>Sharp Aquos 42" LC42D64U 1080p LCD HDTV</b>	Qty	3
	Manufacturer Part# LC42D64U Dell Part# A1268405	Unit Price	\$1,529.10
			<b>TOTAL:\$4,587.30</b>

	<b>Total Price</b>
<b>Sub-total</b>	<b>\$4,908.60</b>
<b>Shipping &amp; Handling</b>	<b>\$0.00</b>
<b>Total Price<sup>1</sup></b>	<b>--</b>

© 2008 Dell For customers of the 50 United States and the District of Columbia only.  
[Site Terms](#) | [Terms of Sale](#) | [Privacy](#) | [Feedback](#)

[▲ Top](#)

[Large Text](#)  
sn ECM6