



PEOPLE

Associate Professor of Philosophy, **Dr. Keith Dromm** Louisiana Scholars' College, attended the Eastern Division Meeting of the American Philosophical Association in New York City. He presented his paper "CGI and Affective Responses to Narrative Films."

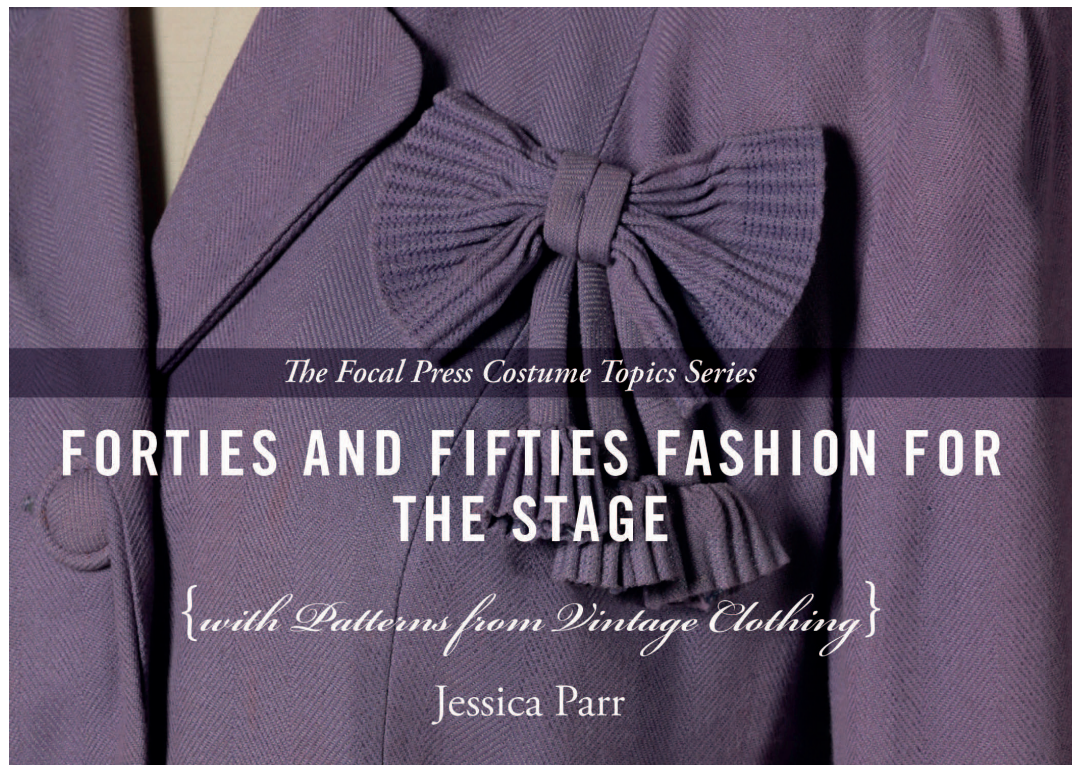
LitCon proposals due March 1

Northwestern State University's third annual LitCon is currently seeking proposals for panels, individual performers and book and art fair participants for its 2019 conference, taking place April 12 and 13 in Natchitoches.

The event is hosted by the Creative Writing Faculty in the Department of English, Foreign Languages and Cultural Studies, and will be held in The Orville J. Hanchey Gallery on Northwestern's main campus.

"LitCon seeks to bring the energy and atmosphere

Continued on Page 3



The Focal Press Costume Topics Series

FORTIES AND FIFTIES FASHION FOR THE STAGE

{with Patterns from Vintage Clothing}

Jessica Parr

Vintage clothing exhibition celebrates local families

Reception, book signing for NSU author/costume designer Feb. 1

As part of the Northwestern State University's School of Creative and Performing Arts' 30th anniversary, the Orville Hanchey Art Gallery will present an exhibit of vintage garments from the book, "Forties and Fifties Fashion for the Stage" by **Jessica Parr**, professor of costume design.

A reception and book signing will be held from 4-6 p.m. Friday, Feb. 1 in the Gallery. The exhibition will continue through Feb. 22.

Parr was inspired to write the book by two generous vintage clothing donations from the Hogg and Luster families. The collection of Becky Bill Page Luster spans the 1940s and 1950s while the collection

of Thelma Louise Firestone Hogg includes garments from the 50s through the 70s.

"Each of these collections is a treasure in fabric," Parr said. "From the moment these collections hit the costume shop, I knew they contained a book waiting to be written. It is rare to receive such large and complete donations from these eras especially from a single individual. Each of these family matriarchs dressed to the nines; their style and flare can be seen throughout the exhibit."

Parr noted it was difficult to choose which garments to include in the book.

"Each is beautiful and uniquely detailed."

Continued on Page 2

Northwestern State University does not discriminate on the basis of race, color, gender, religion, sexual orientation, national origin, disability, genetic information, age, pregnancy or parenting status, and veteran or retirement status in its programs and activities and provides equal access to the Boy Scouts and other designated youth groups.

The following have been designated to handle inquiries regarding non-discrimination policies (i.e., Title IX): Employees/Potential Employees - Veronica M. Biscoe, EEO Officer (318-357-6359) or Students - Frances Conine, Dean of Students (318-357-5286).

For Americans with Disabilities Act (ADA) concerns, contact the Disability Support and Tutoring Director, Catherine Fauchaux, at 318-357-4460.

*Inquiries regarding employment applications should call Business Affairs (318-357-5446).



Monthly lunches at Columns Cafe start Feb. 7

The Columns Café at Northwestern State University will be open for lunch Thursday, Feb. 7 with seatings at 11 a.m. and 11:30 a.m.

Students from the Hospitality Management and Tourism program will prepare and present plate lunches with dessert and choice of tea or water. The Feb. 7 menu will include poboys on artisan bread for \$15.

The Columns Café is located in Room 225 on the second floor of the Family and Consumer Sciences building. The Café is run by students who plan, prepare and execute seasonal, locally-sourced lunch and dinner meals. Proceeds go towards student scholarships and departmental

funds to support the success of the program.

Advance reservations are required. To make reservations, visit <https://columnscafelunchfeb7th.eventbrite.com>. Patrons will be contacted with a confirmation. Seating is directed to ensure all seats are full. Upcoming lunches for the Spring 2019 semester will be on March 7, April 11 and May 2.

Themed dinners will be served at 6 p.m. on Feb. 28 (Mardi Gras), March 14 (Spanish) and April 25 (Greek).

For more information, contact Landon Amberg at (318) 357- 5072 or amberg1@nsula.edu.

Vintage Clothing Exhibition ... Continued from Page 1

Many garments were made by Thelma Louise Firestone Hogg's mother, a talented Atlanta dressmaker. Many of these dresses continue to be worn by family and friends for special occasions. Great granddaughter Sophia Hogg will wear one such gown for the reception.

In addition to charming dresses, the exhibit features hats on loan from the Hogg and Luster family's private collections.

Parr's research for "Forties and Fifties Fashion for the Stage" lead her to the

University's yearbook, *The Potpourri*.

Many of *The Potpourri*'s photographs are displayed in the exhibit and throughout the book.

Each of these photographs depicts real people wearing real outfits to real events. Parr was excited to find so much valuable research from a local source.

"It's a costume historian's dream. It was fascinating to see how Northwestern embraced the war effort in the 40s and blossomed in the 50s as the GI Bill enabled veterans to attend

college."

This exhibit coincides with the Louisiana Sports Hall of Fame & Northwest Louisiana History Museum's exhibit on Louisiana's role in World War II – The Pelican State Goes to War. History buffs can enjoy both receptions February 1 at 4 p.m. at the Hanchey Gallery and the Sports Hall of Fame from 5-8 p.m.

Orville Hanchey Gallery hours are 8 a.m.-5 p.m. Monday-Thursday and 9 a.m.-noon Friday. For more information, contact Parr at parrj@nsula.edu.

News from the Cammie G. Henry Research Center

During the week of January 7-11, the three Louisiana School for Math, Science, and the Arts Special Project classes utilized the resources in the Cammie G. Henry Research Center.

Assistant Archivist **Sharon Wolf** and Head Archivist **Mary Linn Wernet** conducted a full day rare book and paper workshop with Instructor of Latin Morris Tichenor. Instructor of French Nathalie Malti brought her students in the CGHRC for a half day session on Creole culture in Natchitoches. Associate Lecturer of English Emily Allen lead her students several sources in the CGHRC concerning 19th Century death, mourning and cemetery customs and traditions in Natchitoches.

Wernet was involved in several conference planning meetings in January. On January 11, she attended the North Louisiana board meeting in Shreveport.

On January 17, Wernet attended the Louisiana Association of Museum Conference

local arrangements committee at the downtown State Museum. During the meeting, she agreed to provide a presentation on CGHRC Melrose Collection at the association's September conference in Natchitoches.

On January 21, she attended the Jefferson Highway Conference planning meeting at Natchitoches Convention and Visitor's Center. At the meeting, Jefferson Highway Association members requested Wernet to give a presentation on the resources related to the Jefferson Highway that are in the CGHRC.

On January 26, Wernet attended the St. Augustine Historical Association annual meeting and displayed a traveling exhibit on the Natchitoches Creole heritage from the resources in the CGHRC.

At the meeting, association's President Dr. Mark Guidry recognized Wernet for her consistent and dedicated service with the Association.

LitCon ... Continued from Page 1

of pop culture conventions to the realm of humanities festivals and academic conferences, creating a hybrid experience centered around the joy and evolution of our collective arts and practices," said **Dr. Rebecca Macijeski**, Creative Writing Program Coordinator. "This conference is for visual artists, writers, writing programs, independent and academic publishers, academics, students and fans."

Additionally, there is a small number of spaces available for book and art fair participants.

The book and art fair will operate from 10 a.m. to 5 p.m. both days. Tables are free, but space is limited. All money generated from sales go toward the artist.

Submissions are due March 1, 2019.

Individual proposals

must include an abstract (200 words or less) and a 50-word program-ready bio.

Panel proposals must include a panel description (150 words or less, program-ready) and a 50-pword program-ready bio for each participant (3-5 participants per panel). Book and art fair proposals must include a table description (150 words or less) describing how the space will be used (book and art sales, demonstrations, etc.), as well as a 50-word program-ready description of your table.

The LitCon Board is made up of the Creative Writing Faculty in the Department of English, Foreign Languages, and Cultural Studies. Panel submissions will be assessed in a timely fashion, with every effort made to have notice to prospective participants by March 15.

Desired proposals include individual authors and artists working in various media and/or formats seeking an audience for their work, showcases of writing groups and programs, both academic and otherwise; papers and proposals on fan culture, form and theory of creative writing and/or visual art, the intersection of pop culture and academic culture, and the pedagogies of these various topics; independent publishers, art collectives, and other institutions seeking to connect with fans and students and other humanities-related offerings that may not be listed here

An individual may submit up to three proposals. The conference cannot fund presenters.

Send all proposals to macijeskir@nsula.edu. Proposals are due March 1.

Resources and Assistance

For assistance in seeking information about funding opportunities, preparing proposals or administering projects, contact the Office of Sponsored Programs by phone, 357-5222; e-mail at orsp@nsula.edu, or visit the OSP website at <http://www.nsula.edu/orsp>.

OSP Staff

Carla Howell
Director

Alysia Jones
Associate
Director



NSU dependents receive ADVANCE tuition discount

Northwestern State University will host the 31st summer session of the ADVANCE Program for Young Scholars July 7 – 27.

Children and/or dependents of Northwestern State faculty/staff/students from all campuses are eligible for a \$250 tuition discount.

The ADVANCE Program for Young Scholars (ADVANCE) at Northwestern State is a three-week residential program that academically challenges and socially engages gifted students who are currently in 7th – 11th grades. ADVANCE is a collaborative program with Duke University's Talent

Identification Program (Duke TIP).

Admittance to ADVANCE is based on minimum ACT or SAT scores.

If students have not taken an ACT or SAT, or their scores did not meet or surpass ADVANCE's eligibility criteria, they may apply through the program's alternate admissions policy.

Courses being offered include the humanities, mathematics, natural sciences with laboratory components, and computer science. By working with carefully selected instructors and teaching assistants (TAs), and limiting class enrollment to 15 students,

each student is given the opportunity to attain maximum academic growth.

While the academic program at ADVANCE is top-notch, the residential program sets ADVANCE apart from other similar summer programs. The residential assistants (RAs) offer a wide variety of social and recreational activities to assist students in forming lasting friendships, strengthen the ADVANCE community, and help all students have a great time.

Applications are now being accepted. For further information visit <http://advance.nsula.edu> or call (318) 357-4500.

Office of Sponsored Programs

CONGRATULATIONS

Dr. Donald Johnston, College of Nursing and Allied Health, received notification of a \$25,000 award from the American Association of Colleges of Nursing through the National Institute of Health for “NIH/AACN All of Us Research Grant.”

Dr. Dana Clawson, College of Nursing and Allied Health, received notification of the first disbursement of \$74,250 as a portion of the total \$386,400 five-year award from Natchitoches Regional Medical Center/NRMC Foundation for “Natchitoches Regional Medical Center/NRMC Foundation – NSU MOU for BSN Faculty Support.”

Dr. Jafar Al-Sharab, Department of Engineering Technology, College of Business and Technology, received notifications of a \$4,000 award from the For Inspiration and Recognition of Science and Technology (FIRST) Foundation for “NSU Demons Robotics.”

Dr. Kimberly McAlister, Department of Teaching, Leadership and Counseling, College of Education and Human Development, received notification of a \$76,487 award as a portion of the total five-year award from The Orchard Foundation through the U.S. Department of Education for “Central Louisiana Instructional Partnership (CLIP).”

Dr. Dustin Hebert is collaborator.

Dr. Begona Perez-Mira, School of Business, College of Business and Technology, received notification of a \$54,343 award as a portion of the total five-year award from The Orchard Foundation through the U.S. Department of Education for “Central Louisiana Instructional Partnership (CLIP).”

Dr. Sarah Wright and **Mr. Curtis Penrod** are collaborators.

CURRENT ACTIVITIES

Dr. Dana Clawson, College of Nursing and Allied Health, submitted a proposal to Central Louisiana Healthcare Agencies entitled “CENLA Healthcare Sector Partnership Committee Project for Undergraduate Nursing Faculty Support.” **Ms. Carolyn Hartt** and **Ms. Maxine Johnson** are collaborators.

The following individuals submitted a proposal to the Louisiana Board of Regents Support Fund

(BoRSF) Departmental Enhancement subprogram:

Dr. Daniel Rivera-Vasquez, School of Biological and Physical Sciences, College of Arts and Sciences, for “Atomic Force Microscope for the Enhancement of Multidisciplinary Teaching and Research.” **Dr. Shreyashi Ganguly** and **Mrs. Anna Dugas** are collaborators;

Dr. Christopher Lyles, School of Biological and Physical Sciences, College of Arts and Sciences, for “Enhancement of Biochemistry Laboratory Curriculum to Improve Capacity for Proteomic Studies.” **Drs. Li Ma** and **Zeljko Radulovic** are collaborators;

Dr. Jennifer Hill, School of Biological and Physical Sciences, College of Arts and Sciences, for “Enhancement of Undergraduate Scholarship through NMR Spectroscopy.” **Dr. Daniel Rivera-Vasquez** is collaborator;

Dr. Shreyashi Ganguly, School of Biological and Physical Sciences, College of Arts and Sciences, for “Enhancement of Undergraduate Course Curriculum and Research through Acquisition of a Potentiostat/Galvanostat.” **Drs. Daniel Rivera-Vasquez** and **Nabin Sapkota** and **Mr. Ellis Antoon** are collaborators;

Dr. Chad Thibodeaux, School of Biological and Physical Sciences, College of Arts and Sciences, for “Microwave System for Enhanced Organic Synthesis and Safer Sample Preparation.” **Dr. Daniel Rivera-Vasquez** is collaborator;

Mr. Oliver Molina, School of Creating and Performing Arts/Music, College of Arts and Sciences, for “Addition of World Music Ensemble Course Offerings through the Acquisition of Musical Instruments”;

Ms. Mirla Gonzalez Enriquez, School of Creating and Performing Arts/Fine and Graphic Arts, College of Arts and Sciences, for “Workforce Training: Enhancement of Technologies Capabilities through the Upgrade of the Advanced Interdisciplinary Computer Lab.” **Mr. Michael Yankowski**, **Mr. Collier Hyams** and **Mr. Jason Powell** are collaborators;

Mr. Robert Richoux, School of Creative and Performing Arts/Theatre and Dance, College of Arts and Sciences, for “Scenic Lab Safety and Creative Technology.” **Mrs. Karn Richoux** is collaborator; and

Dr. Eddie Horton, School of Business/Computer Information Systems, College of Business and Technology, for “Network Security Lab.”

*For more information regarding funding opportunities,
visit OSP’s website at orsp@nsula.edu.*

TEAS Test Boot Camp

3 hours of intense MUST KNOW information!

- Receive study tips for test success!
- Review material on each TEAS section: Reading, Math, Science and English

Recommended Textbook: Mometrix Test Preparation (2016). ATI TEAS Secrets Study Guide, ISBN: 978-1-5167-0383-8

Date: February 1, Friday Sess. 1
February 22, Friday Sess. 2
Time: 1:00 - 4:00 pm
Fee: \$35 (pre-register)
\$45 (day of offering)

Location: 2nd Floor South Hall
Instructor: Amy M. Garcie, DNP, RN, CNML

***DISCLAIMER: Persons participating in one of the review courses listed above to help prepare for the ATI TEAS test must realize that there is no guarantee stated or implied that participation will assure a passing score on the test.

Pick Up Your Brush - Painting Classes

In these classes, you will learn the art of painting using step-by-step instructions to create a masterpiece of your own. No special or prior skill required. Just relax and enjoy each class. Students will take home a completed painting at the end of every class. Children ages 7 – 12 years old may enroll, but a parent MUST accompany the child the entire class. Parent does not have to enroll unless they participate. **Each date is a separate session.** All supplies included.

Dates: February 2, Saturday (Lovebirds)
February 21, Thursday (Abstract Guitar)
Times: 6:00 pm - 9:00 pm (Thursdays)
9:00 am -12:00 pm (Saturdays)
Fee: \$45 per session
Location: 2nd Floor South Hall
Instructor: Shanna Dees Gaspard

TEAS Science Review

The Test of Essential Academic Skills (TEAS) is 31% science, 31% reading, 22% mathematics, and 16% English and language usage. The TEAS Science section tests students' ability to:

- Distinguish between DNA, genes, and chromosomes
- Understand the anatomy and physiology of the immune system and skeletal system
- Describe scientific measurements
- Explain cause and effect among events and processes

This review will be a refresher on these topics and include TEAS type science questions.

Recommended Textbook: Mometrix Test Preparation (2016). ATI TEAS Secrets Study Guide, ISBN: 978-1-5167-0383-8

Date: February 8, Friday
Time: 1:00 - 4:00 pm
Fee: \$35 (pre-register)
\$45 (day of offering)
Location: 2nd Floor South Hall
Instructor: Amy M. Garcie, DNP, RN, CNML

***DISCLAIMER: Persons participating in one of the review courses listed above to help prepare for the ATI

Continued on page 7

Non-Credit Courses... Continued from Page 6

TEAS test must realize that there is no guarantee stated or implied that participation will assure a passing score on the test.

Line Dance Class

Exercise your body & mind by dancing to lively, upbeat music. Line Dancing is a fun way to dance socially without a dance partner. Dancing styles covered in this class will include Country Western, Zydeco, Hip-Hop, and an Introduction to Salsa, Waltz.

Date: February 12 - March 19, Tuesdays
Time: 5:30 - 7:00 pm
Fee: \$65
Location: 127 Health & Human Performance (Old PE Majors)
Instructor: Wanda & Avila Kahey

TEAS Math Review

The Test of Essential Academic Skills (TEAS) is 31% reading, 22% math, 31% science, and 16% English and language usage. On the math section, students are required to:

- Identify the relationship between two variables
 - Interpret and evaluate data from tables, charts, and graphs
 - Translate phrases into equations, expressions, and inequalities
 - Convert percentages, decimals, and non-negative fractions
 - Use estimation strategies to solve real-world problems
 - Order and compare rational numbers
- This review will be a refresher on these topics and include

TEAS type questions.

Recommended Textbook: Mometrix Test Preparation (2016). ATI TEAS Secrets Study Guide, ISBN: 978-1-5167-0383-8

Date: February 15, Friday
Time: 1:00 - 4:00 pm
Fee: \$35 (pre-register)
\$45 (day of offering)
Location: 2nd Floor South Hall
Instructor: Amy M. Garcie, DNP, RN, CNML

***DISCLAIMER: Persons participating in one of the review courses listed above to help prepare for the ATI TEAS test must realize that there is no guarantee stated or implied that participation will assure a passing score on the test.

Security+ Intensive Boot Camp

Security+ Intensive Boot Camp- This intensive boot camp is designed with one thing in mind: Certification. In this course you will study, at your own pace, for the CompTIA Security+ (SYO-501) exam. You will be provided resources, lecture notes, and access to a live professor that will prepare you to take the certification exam.

This comprehensive package includes the software, recorded lectures, a test voucher (good for 1 year) and a free retake, and a weekly live session should you need it. These tools will help you succeed and become Security+ certified.

This course is self-paced so that you may begin any time and will have 9 months of live access.

Date: Online/Open Enrollment
Fee: \$1,899
Location: Online
Instructor: Eddie Horton

For more information on our Non-Credit programs,
go to www.nsula.edu/ece/non-credit-programs/ or call (800)376-2422 or (318)357-6355.

To register for classes, go to checkout.nsula.edu

To learn more about our on-line non-credit courses
visit <http://www.gatlineducation.com/nsula> & <http://www.ed2go.com/nsu/>