



NORTHWESTERN STATE

School of Social Sciences and Applied Programs

Bachelor of Science in Unified Public Safety Administration

6 Concentrations (120 Credit Hours)

- Law Enforcement Administration (256A)
- Fire & Emergency Medical Services Administration (256B)
- Emergency Management Administration (256C)
- Public Facilities Management (256D)
- Nuclear Surety Management (256E)
- GEO Computation (256F)

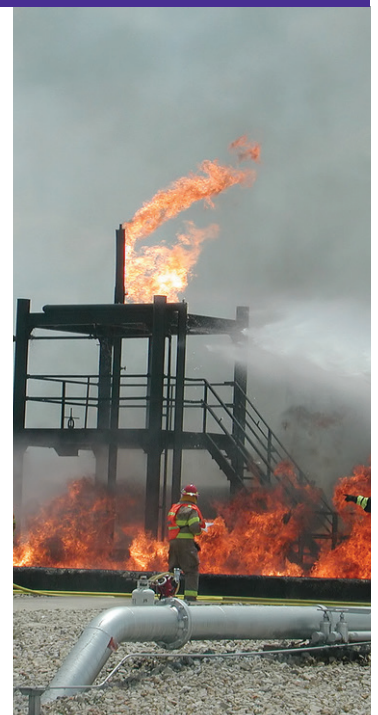
The objective of the Bachelor of Science degree in Unified Public Safety Administration is to provide students with an opportunity to acquire a broad quality-based education and the specific conceptual and research knowledge necessary to be productive practitioners in the Unified Public Safety Administration field. Please visit our website, <http://criminaljustice.nsula.edu/bachelor-of-science-degree-upsa/>, for courses/course descriptions and other information about the degree.

Fee Exemption for Law Enforcement Officers/Public Safety Personnel

Northwestern State University offers fee exemption for commissioned full-time law enforcement or public safety officers, which include firemen and EMS personnel. Undergraduate students may enroll in up to 9 semester hours and Graduate students may enroll in up to 6 semester hours at the reduced rate. Additional hours will be at the standard tuition rate.

Facts

- All degrees available by Internet
- No campus visit (enroll, pay fees, buy books, register for classes on Internet)
- NSU accepts transfer credits
- VA benefits available for eligible Veterans
- NSU designated as a Military Friendly University
- Experiential learning credits available
- Out-of-state Internet only students enrolled in Internet courses pay in-state tuition rate.
- To see what textbooks are being used, please visit the Textbooks in Use link: <http://criminaljustice.nsula.edu/textbooks/>
- To apply for admissions, please visit our website: <http://criminaljustice.nsula.edu/frequently-asked-questions/>



Northwestern State University is dedicated to working with military students and dependents to ensure a smooth process. Our military financial options include a competitive tuition rate of **\$192 per credit hour** for active duty, reservist, retirees, and their dependents. We also recognize various Tuition Assistance programs such as Military TA, Montgomery GI Bill, Post-9/11, and MyCAA.

Credits for Professional Certifications

Each concentration offers the opportunity for credits earned through certifications. The following is a list of each concentration, the credentials needed, and the classes in which credit will be received upon presentation of credentials.

Concentration	Credentials	Credits
256A	<ul style="list-style-type: none"> Students enrolled in the Bachelor of Science degree in Unified Public Safety Administration, Law Enforcement Administration concentration (256A) and have successfully completed the requirements set by the Louisiana Police Officer Standards and Training (P.O.S.T.)[*] Council for the police academy:* Other states equivalency certificates will be accepted in lieu of the Louisiana P.O.S.T. certificate. 	CJ 1100, 2300, and nine hours of electives.
256B	<ul style="list-style-type: none"> Students enrolled in the Fire and Emergency Medical Services Administration concentration (256B) and have completed their National Registry Emergency Medical Technician – Paramedic (NREMT-P): 	CJ 4475, UPSA 2000, 2100, 2250, 2400, 2500, 2700, 2900, one hour elective.
	<ul style="list-style-type: none"> Students enrolled in the Fire and Emergency Medical Services Administration concentration (256B) and have completed their National Emergency Medical Service- Technician–(NEMS-T): 	UPSA 2250.
	<ul style="list-style-type: none"> Students enrolled in the Fire and Emergency Medical Services Administration concentration (256B) and have completed their Louisiana certifications recognized by the Louisiana Office of the State Fire Marshall (or other state’s equivalent) as a Firefighter I and II and Hazardous Materials: will be given credit for the following courses once they present their credentials to the University 	UPSA 2250 and 2900.
256C	<ul style="list-style-type: none"> Students enrolled in the Emergency Management Administration concentration (256C) and hold the Louisiana Emergency Manager Technical Credential: 	UPSA 1500, 2100 and 2700.
	<ul style="list-style-type: none"> Students enrolled in the Emergency Management Administration concentration (256C) and hold the Louisiana Emergency Manager Basic Credential: 	UPSA 1500, 2100, 2550, 2700 and 2900.
	<ul style="list-style-type: none"> Students enrolled in the Emergency Management Administration concentration (256C) and hold the Louisiana Emergency Manager Pro Credential: 	UPSA 1500, 2000, 2100, 2550, 2700, 2900, & 3700.
256D	Public Facilities Management (20 semester hours)	BUAD 3250, 3280; MKTG 3230, 4370; MGT 3220; 5 hrs electives.
256E	Nuclear Surety Management (20 semester hours)	PSCI 3060, 3090, 4080, 4090; HIST 3240, 4980; SpecTop (Sec6); 2 hrs electives.
256F	Geo Computation - Students entering this concentration will possess a technical degree in civil surveying and mapping or equivalent. (20 semester hours)	BUAD 1800, 3250; MKGT 3230; MATH 1090, 2050; PLPS 3060; 2 hrs elective.



Northwestern State University is accredited by the Southern Association of Colleges and Schools Commission on Colleges to award associate, baccalaureate, masters, specialists, and doctorate degrees. Contact the Commission on Colleges at 1866 Southern Lane, Decatur, Georgia 30033-4097 or call 404-679-4500 for questions about the accreditation of Northwestern State University.

Northwestern State University does not discriminate on the basis of race, color, gender, religion, sexual orientation, national origin, disability, genetic information, age, pregnancy or parenting status, and veteran or retirement status in its programs and activities and provides equal access to the Boy Scouts and other designated youth groups. The following individuals have been designated to handle inquiries regarding non-discrimination policies (i.e., Title IX): Employees/Potential Employees – Veronica M. Biscoe, EEO Officer (318-357-6359) and Students – Reatha Cox, Dean of Students (318-357-5285). For Americans with Disabilities Act (ADA) concerns, contact the Accessibility and Disability Support Director, Taylor Camidge, at 318-357-5460. Additionally, Northwestern complies with the Jeanne Clery Disclosure of Campus Security Policy & Campus Crime Statistics Act. Information about NSU’s campus security and crime statistics can be found at <https://www.nsula.edu/universityaffairs/police/>. Full disclosure statement: <https://www.nsula.edu/iehr/>.

